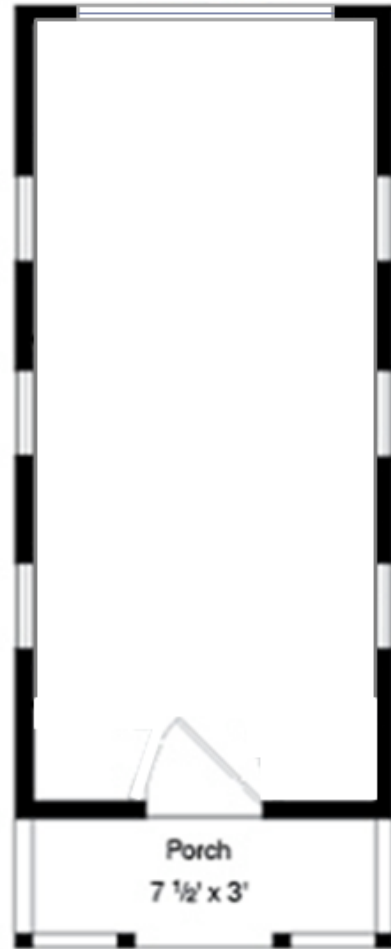


# Tiny House

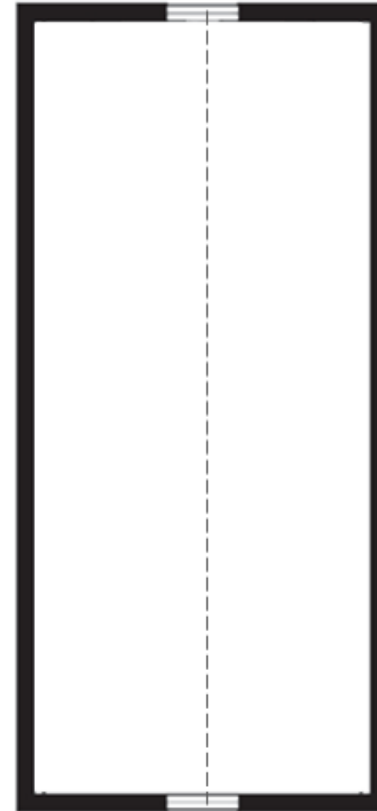
Angie Bonk

# Project Overview

▶ Main floor



▶ Loft area



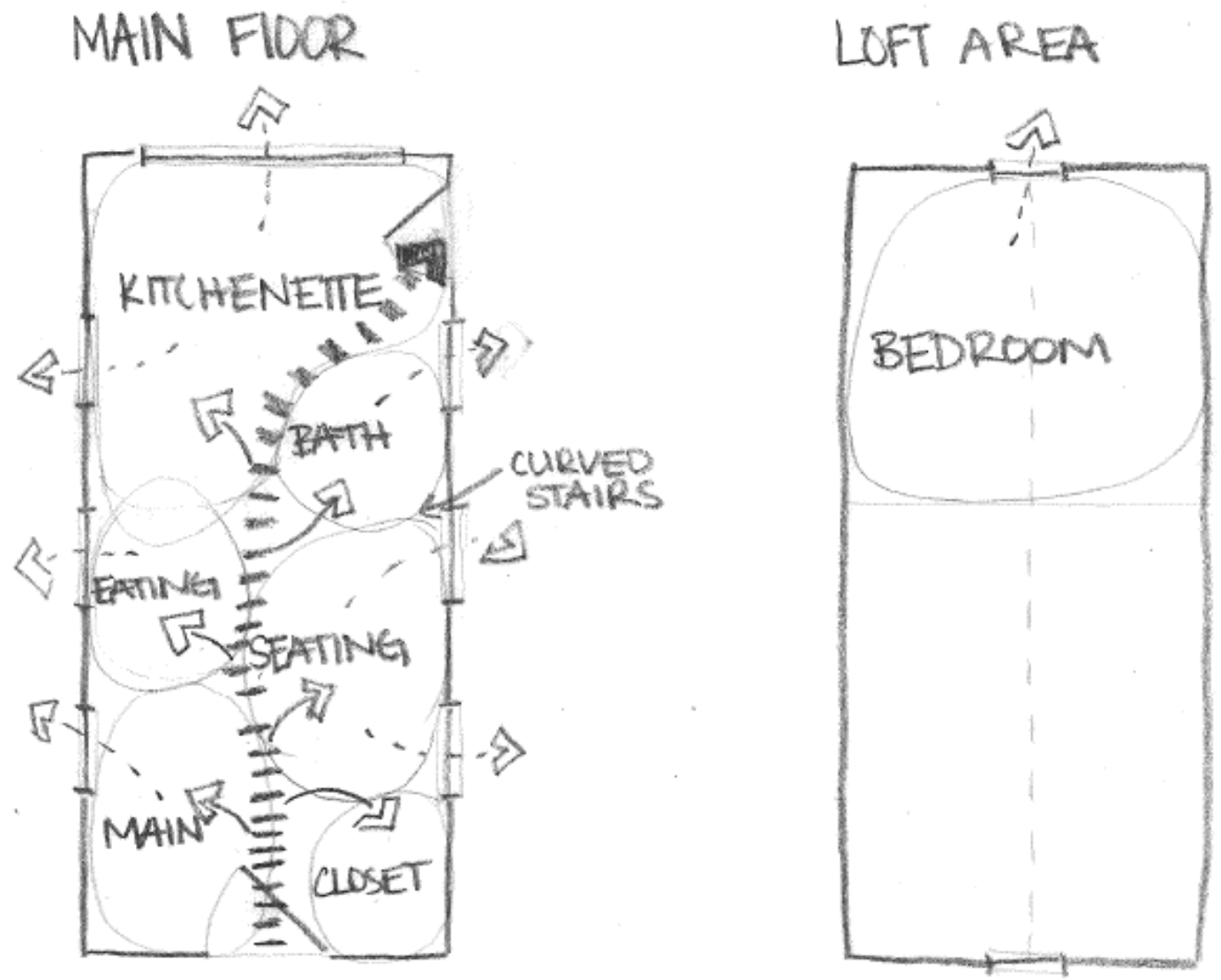
Tiny house dimensions: 9'x19'

# Design Concept

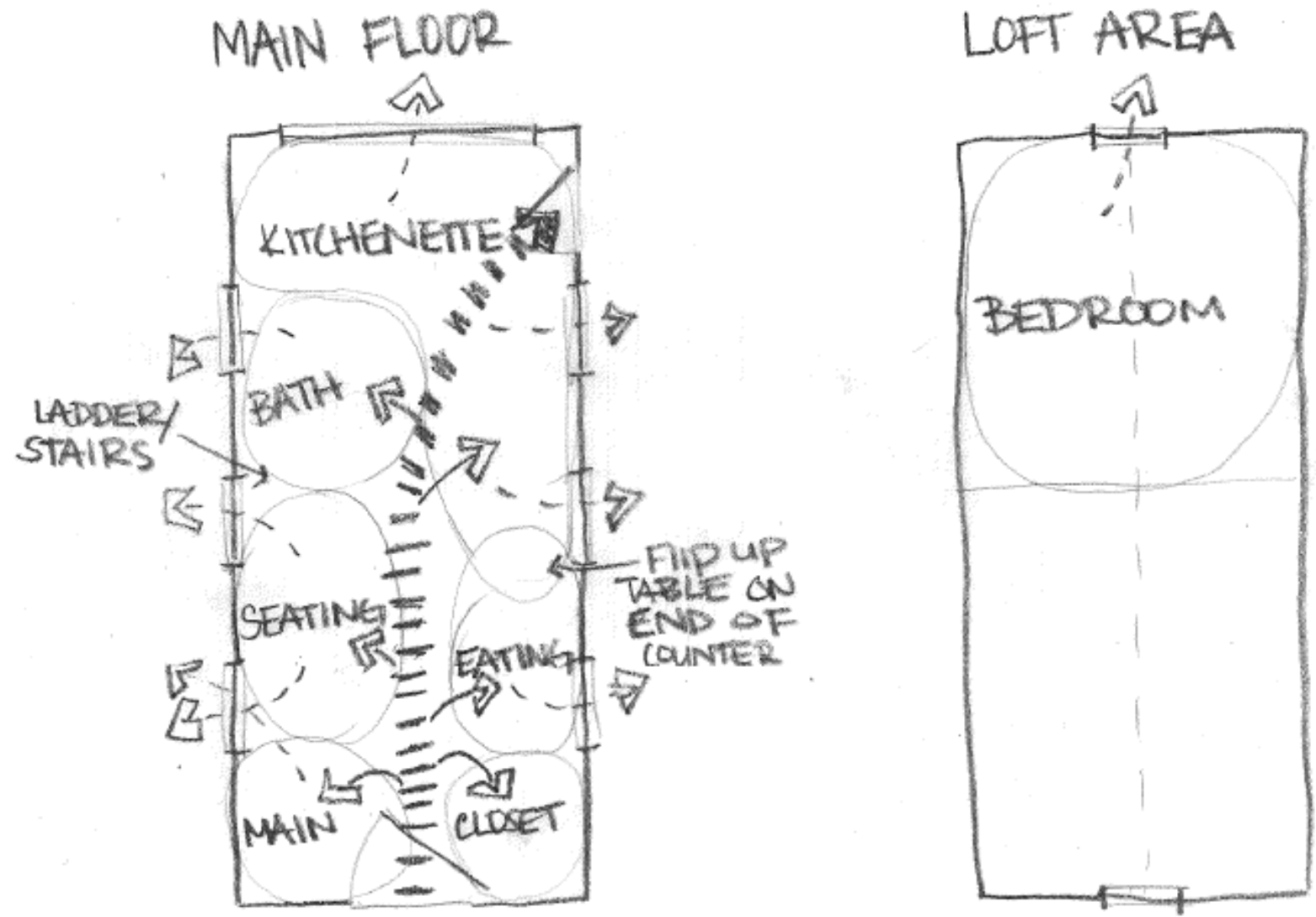
This tiny house is designed for a college student on a tight budget. The tiny house includes architectural and non-architectural elements in order to benefit living small.

Conceptual Drawings:

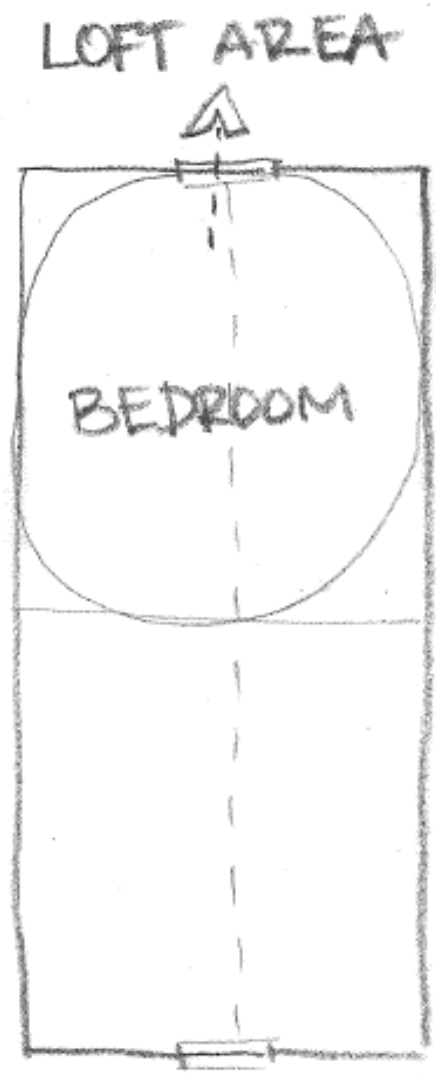
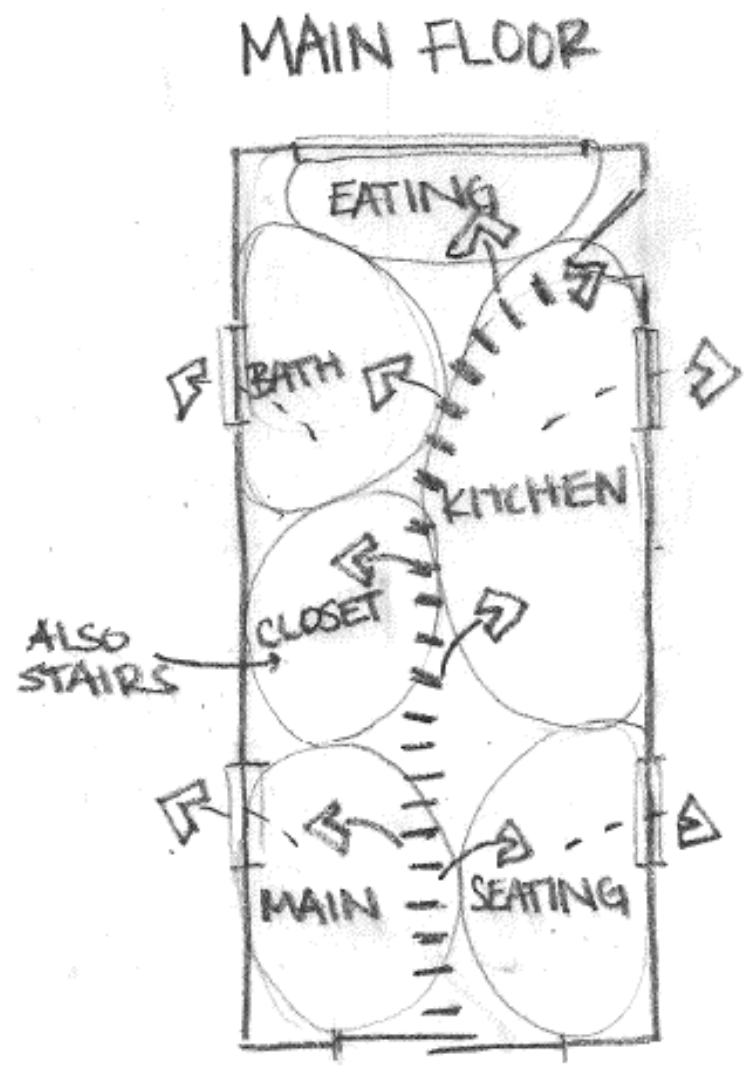
# Bubble Diagram #1



# Bubble Diagram #2



# Bubble Diagram #3

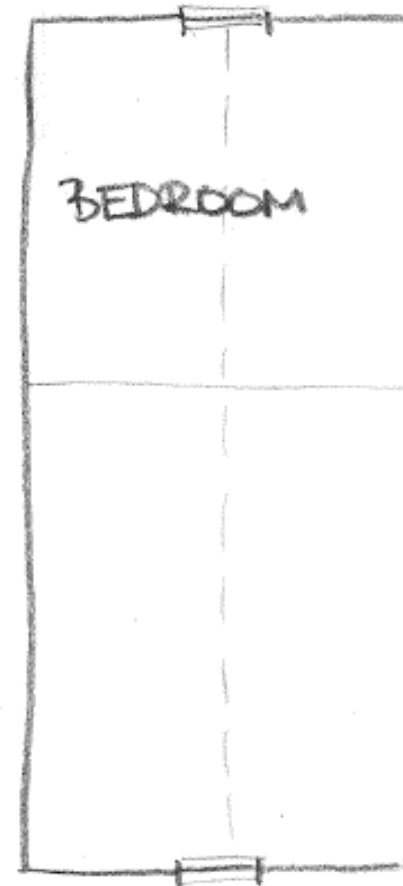


# Block Diagram #1

MAIN FLOOR



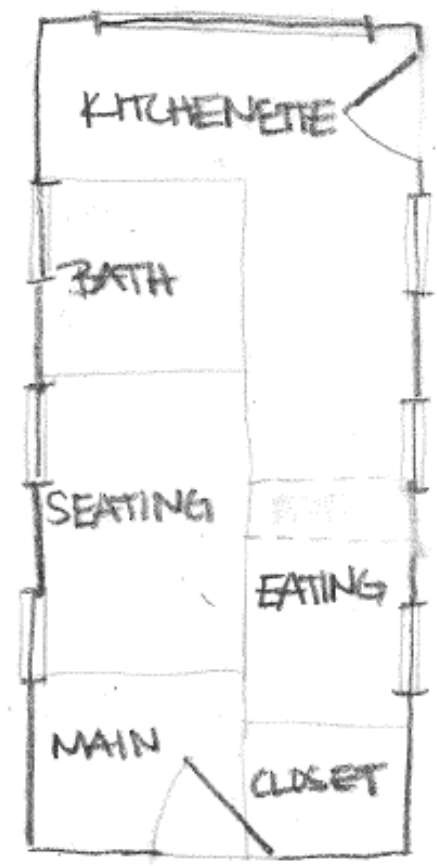
LOFT AREA



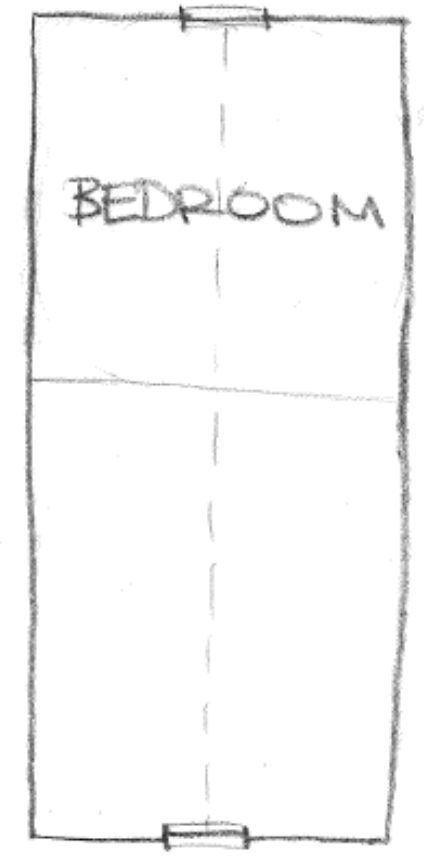


# Block Diagram #2

MAIN FLOOR



LOFT AREA

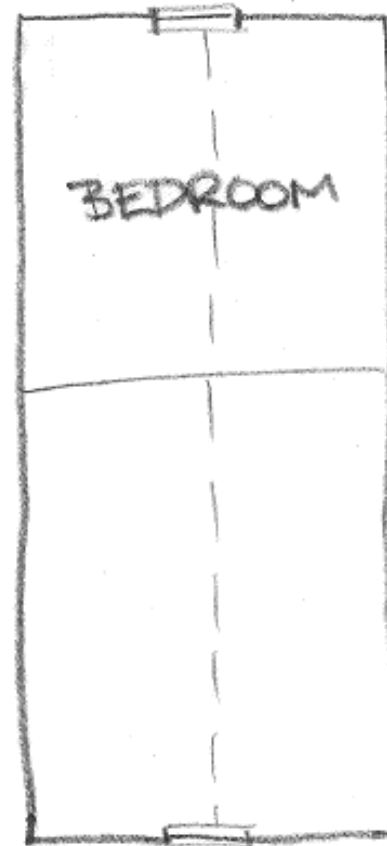


# Block Diagram #3

MAIN FLOOR

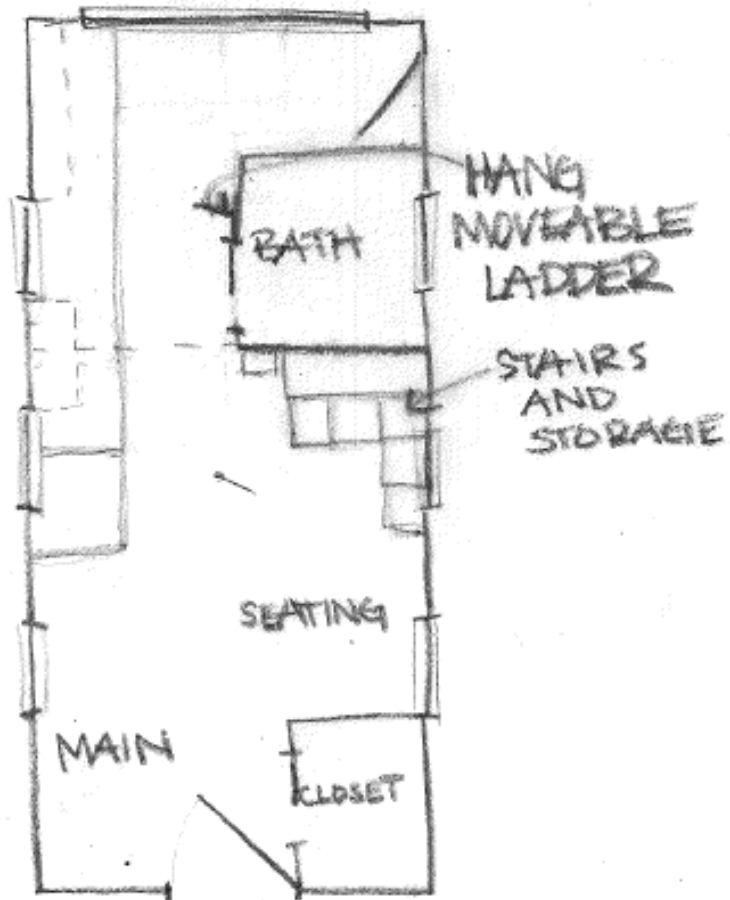


LOFT AREA

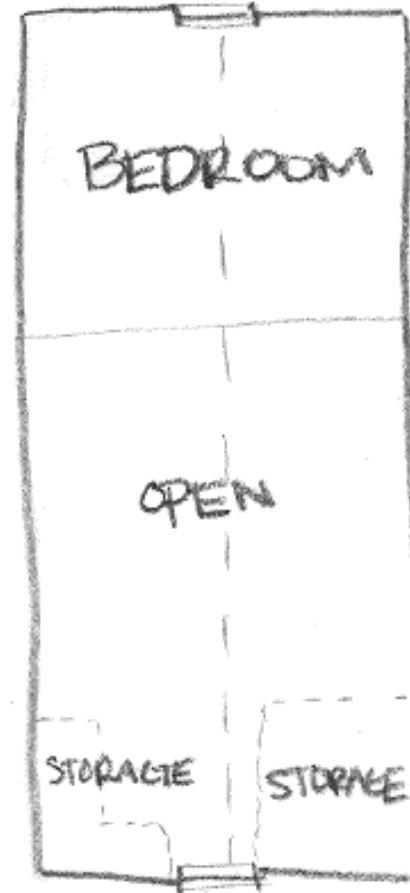


# Loose Diagram #1

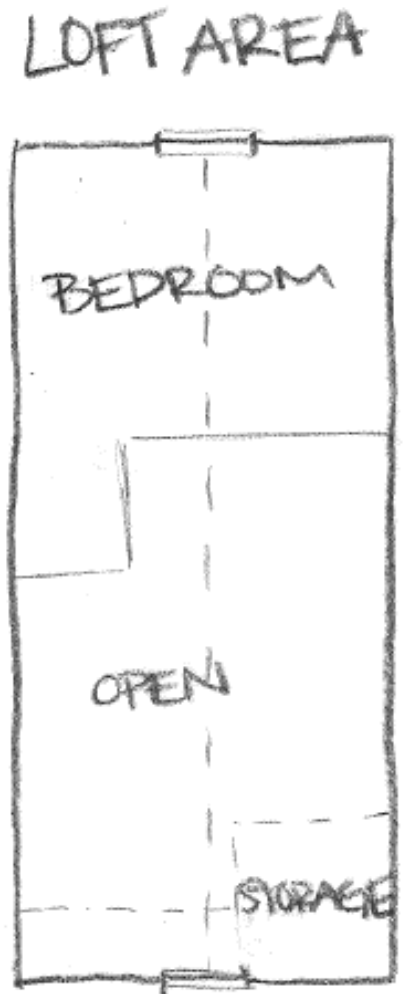
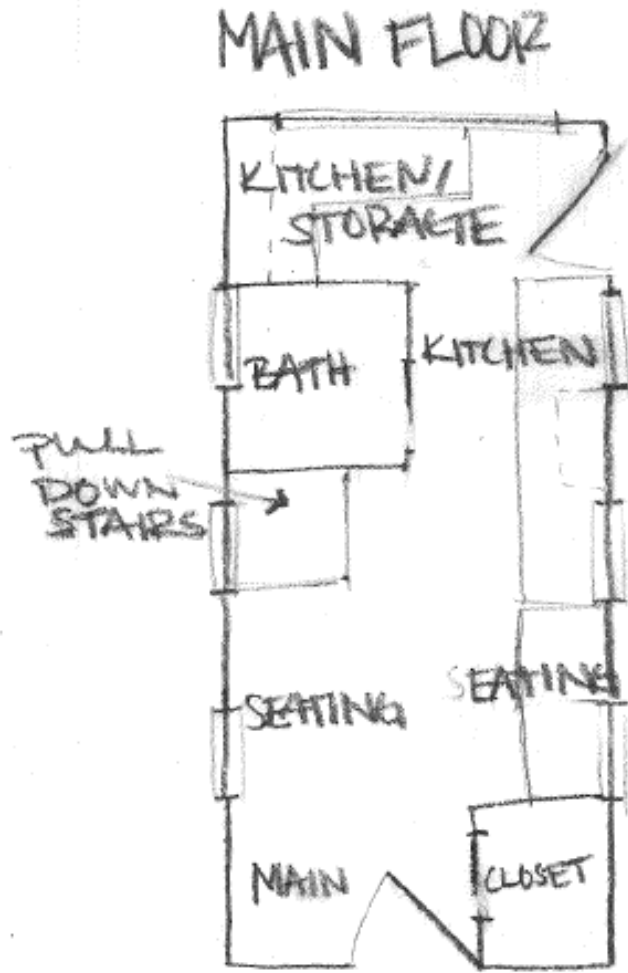
MAIN FLOOR



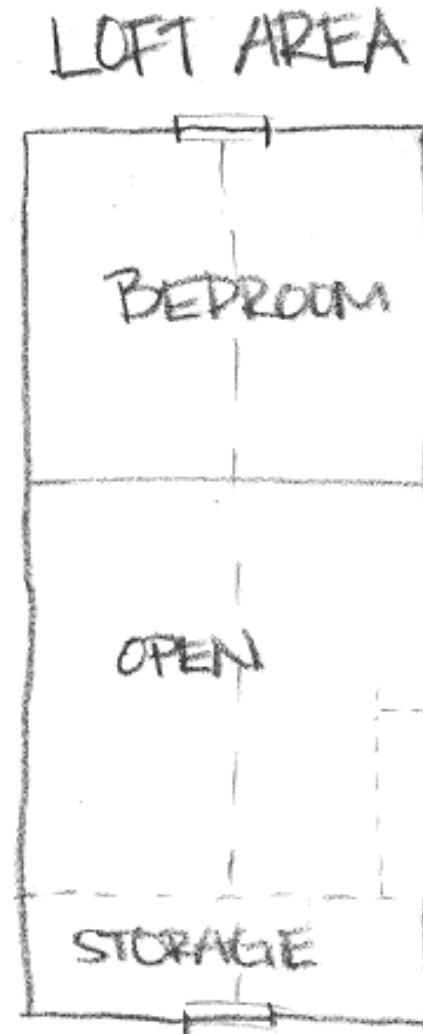
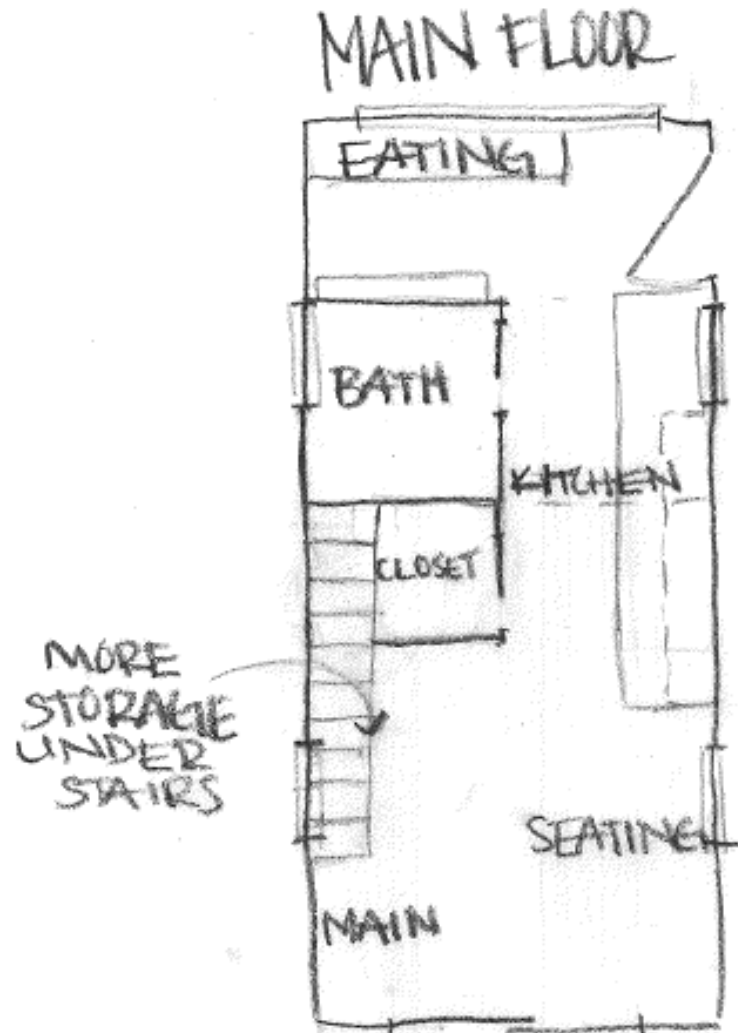
LOFT AREA



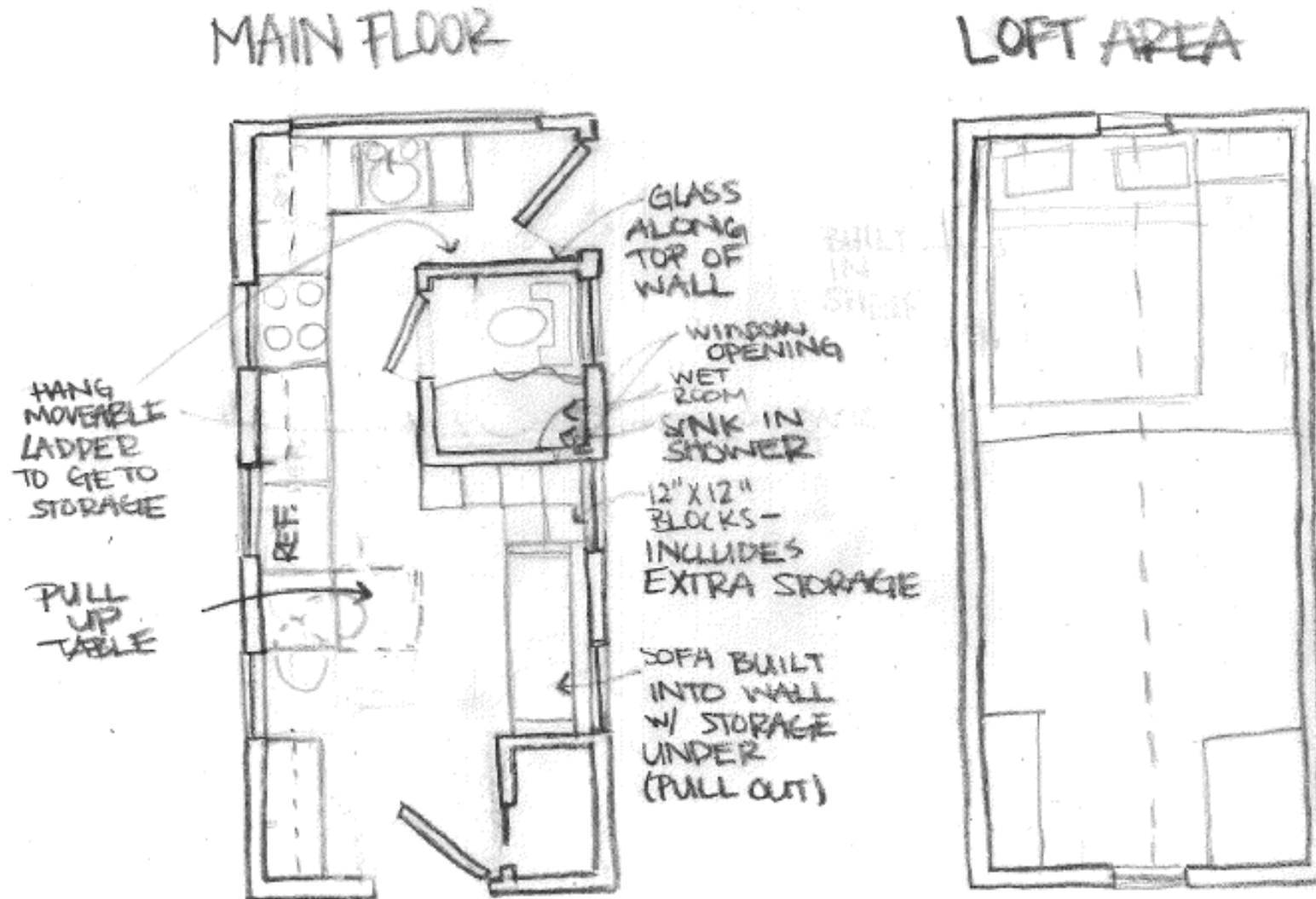
# Loose Diagram #2



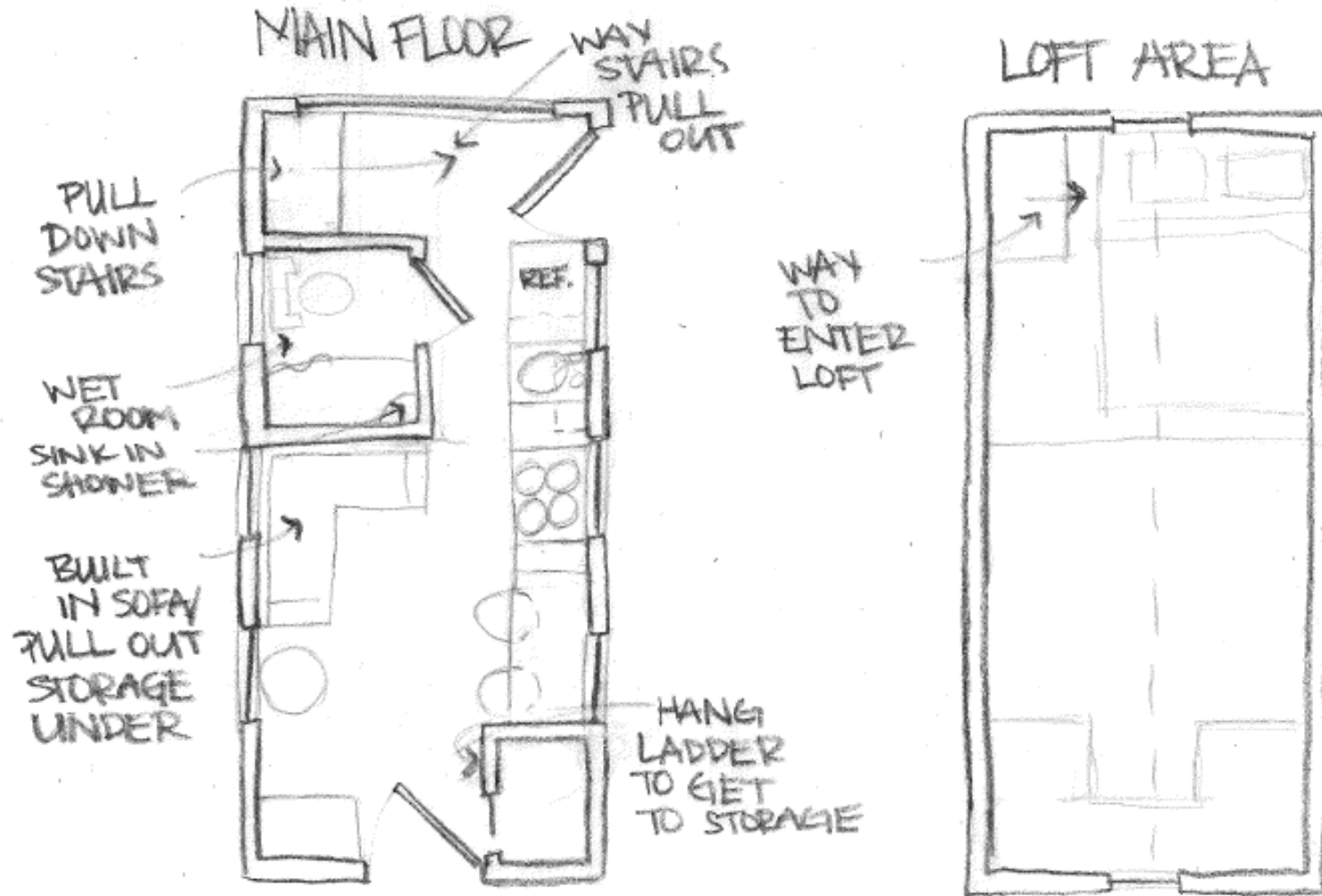
# Loose Diagram #3



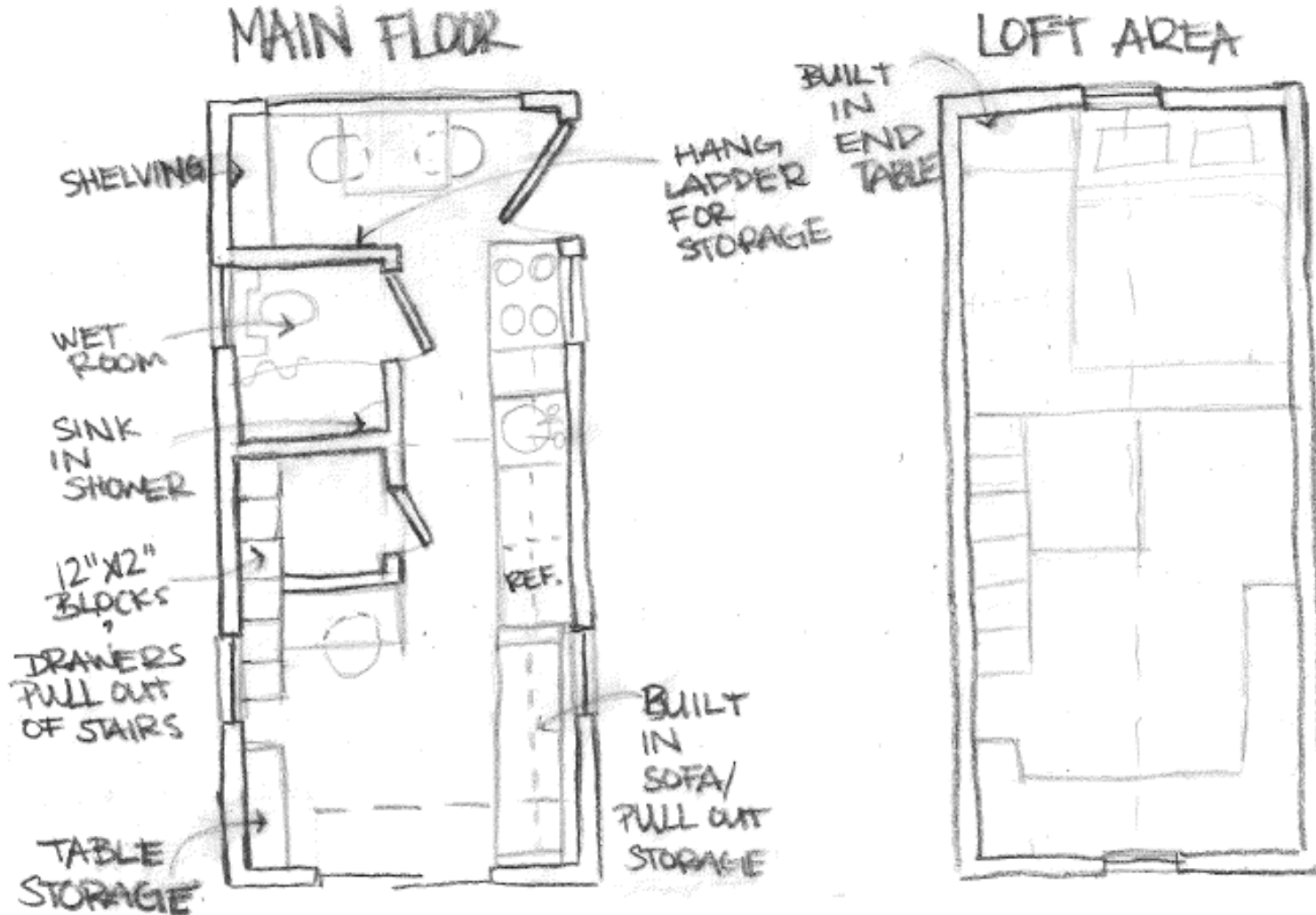
# Refined Diagram #1



# Refined Diagram #2

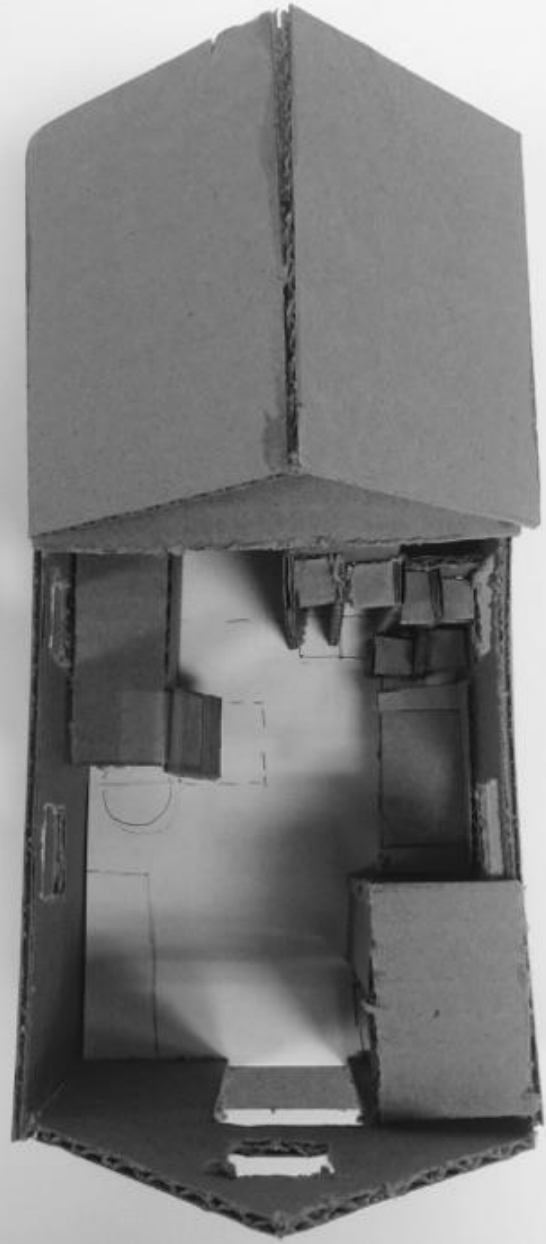


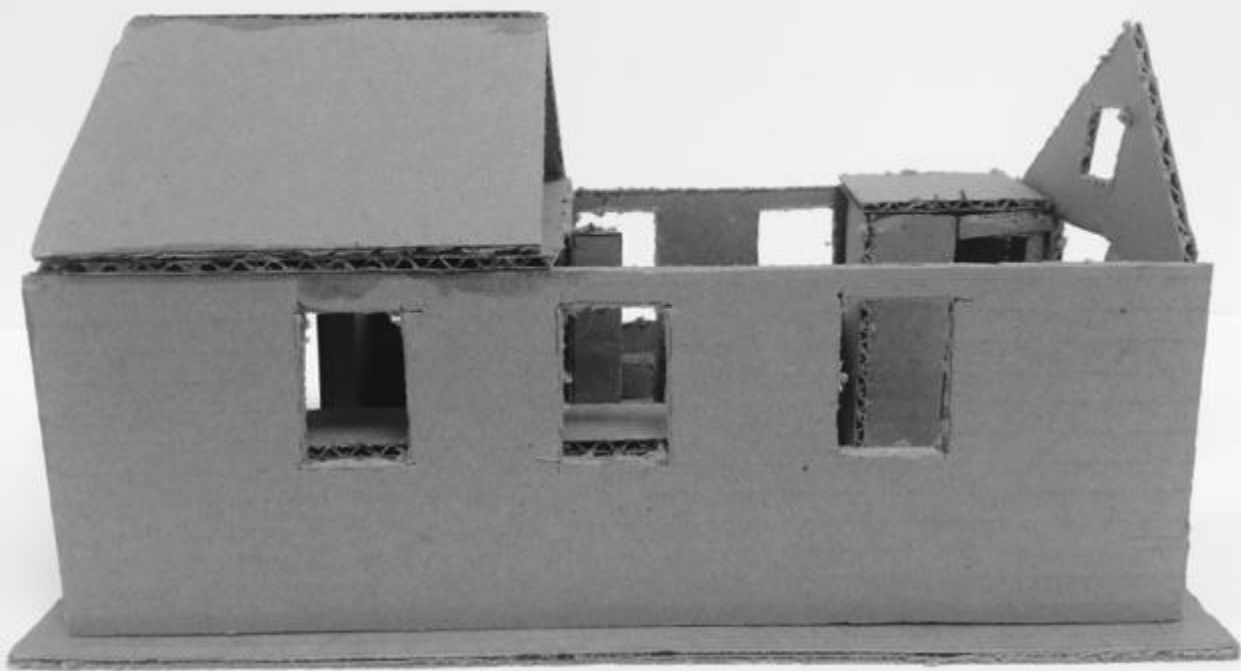
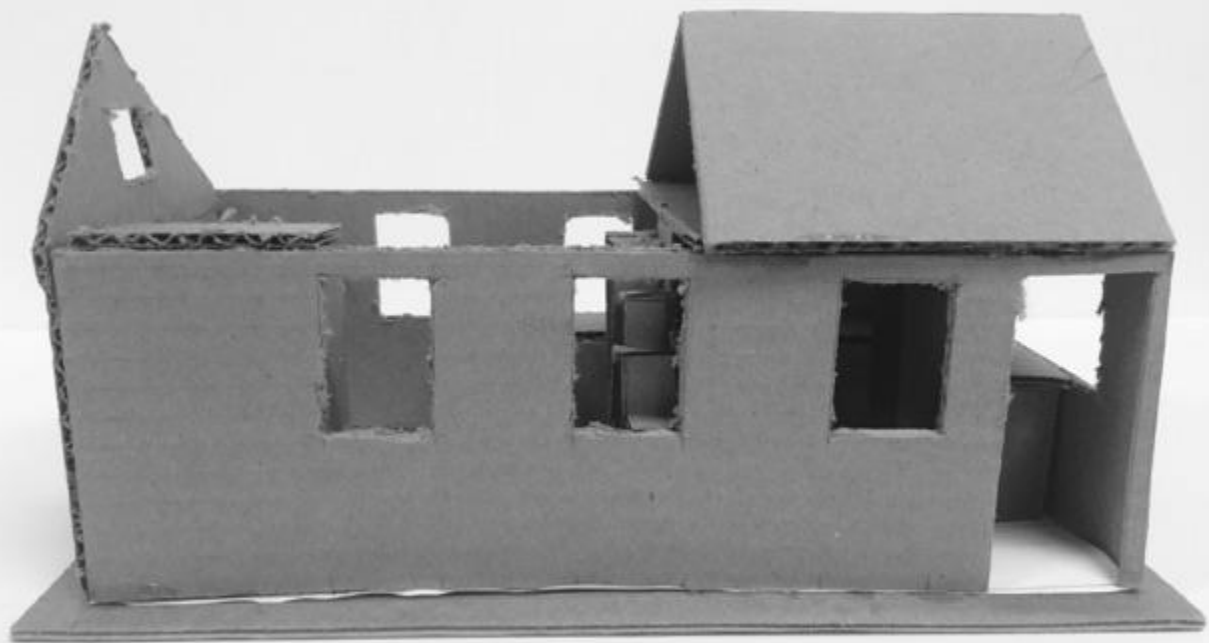
# Refined Diagram #3

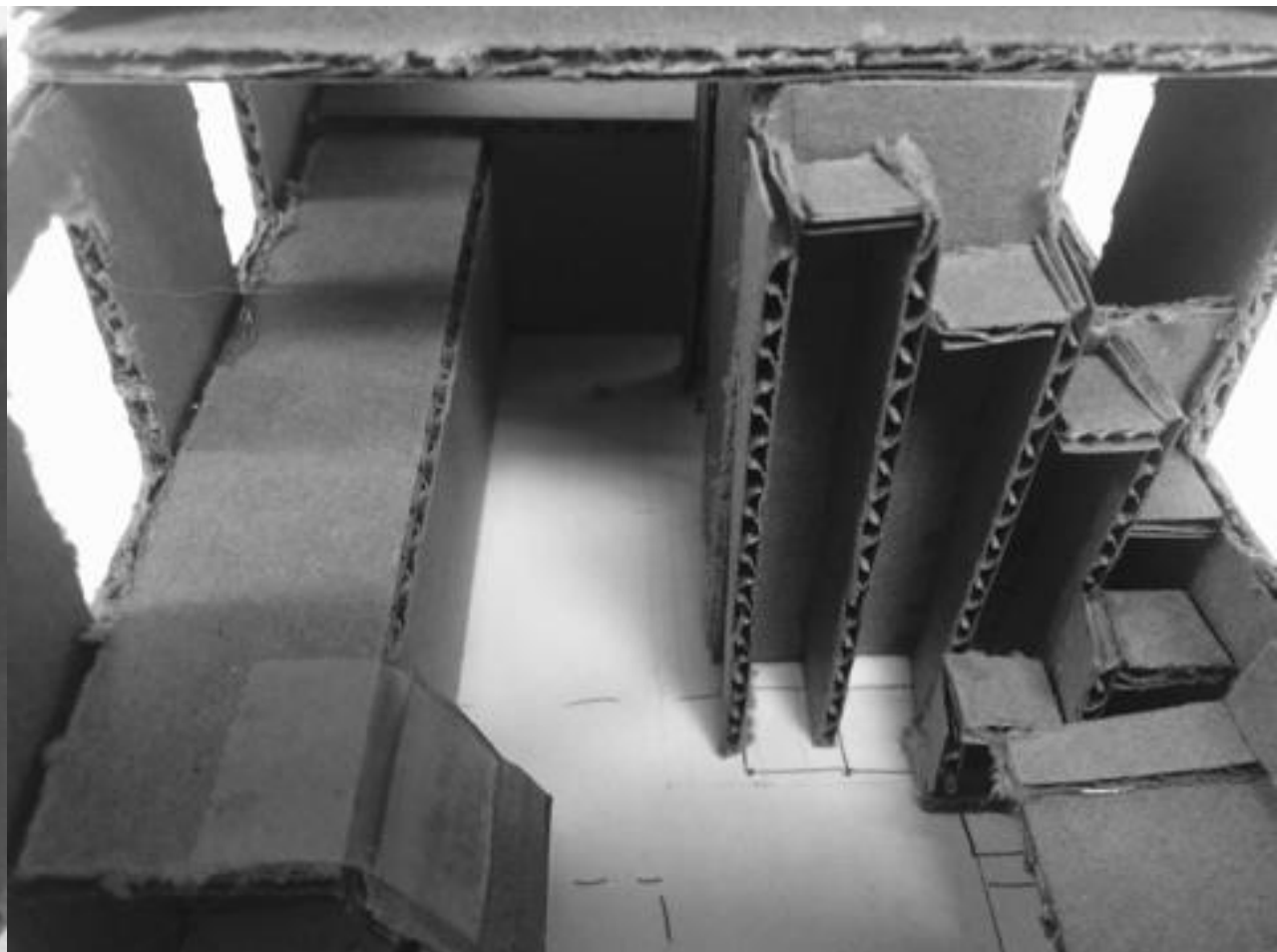
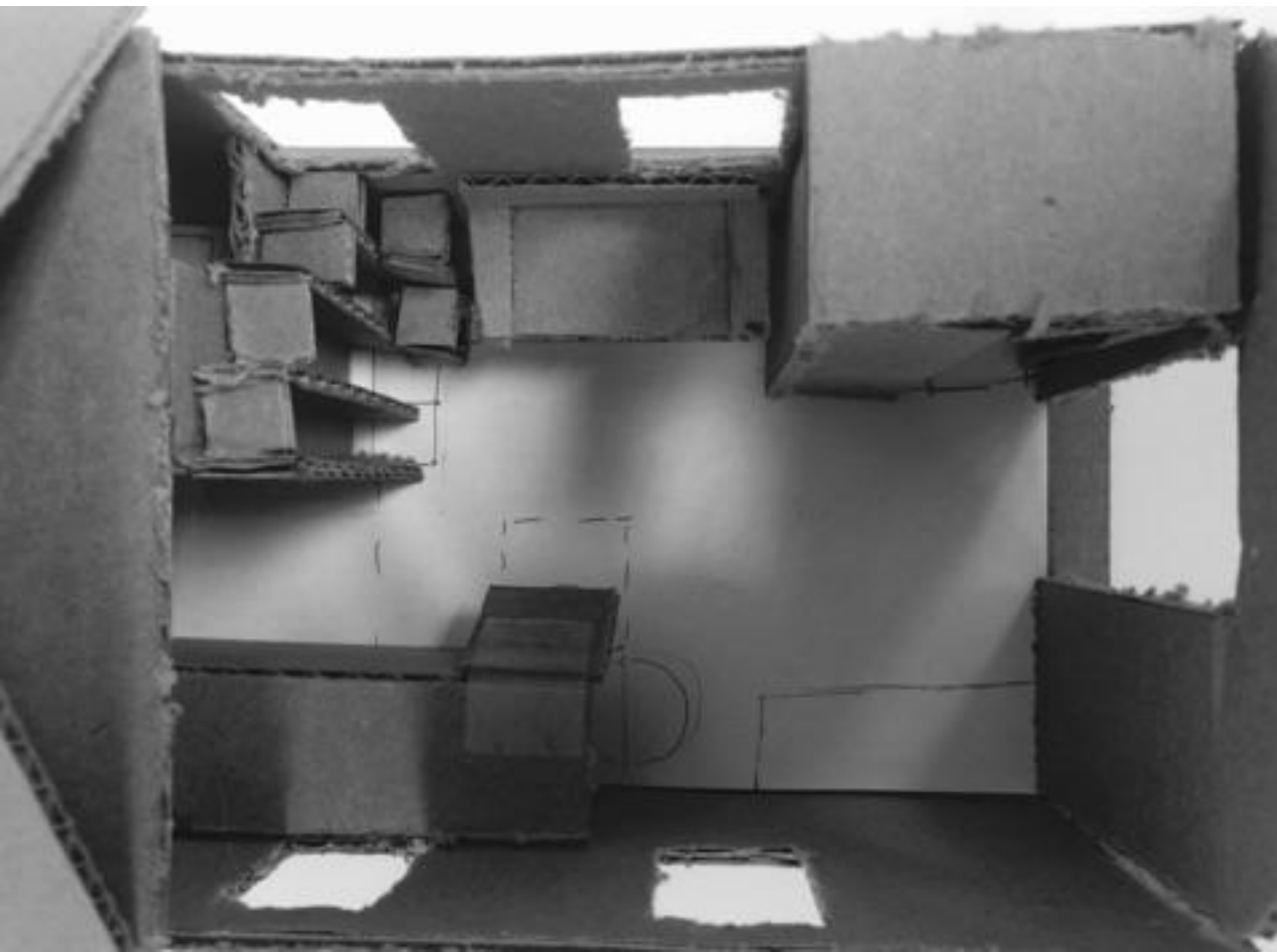




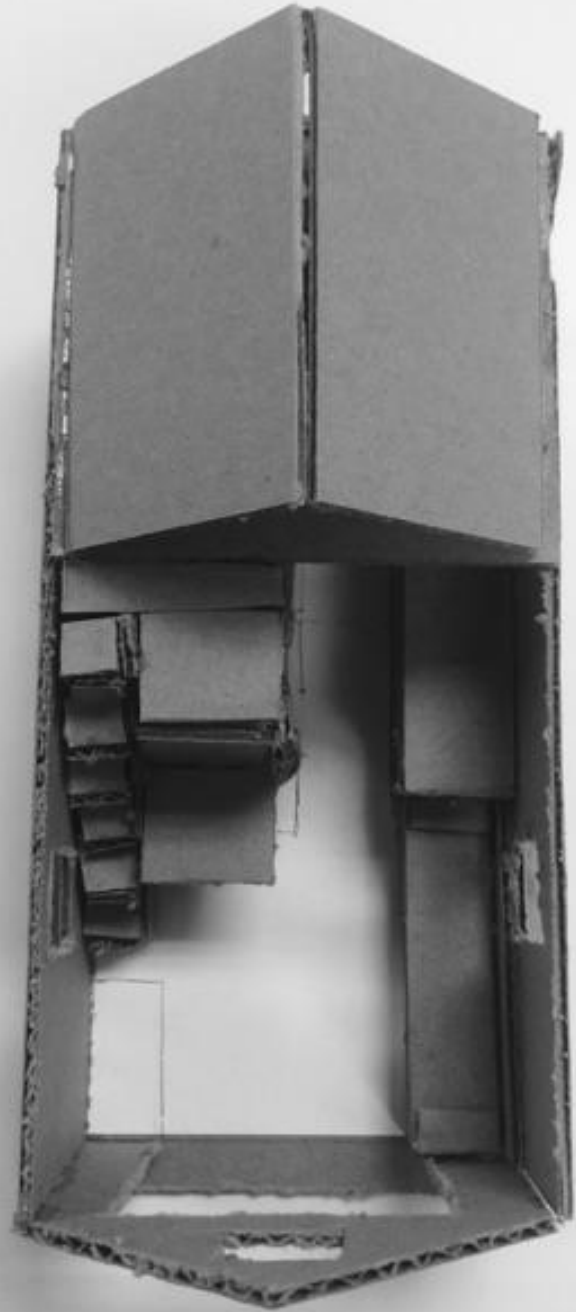
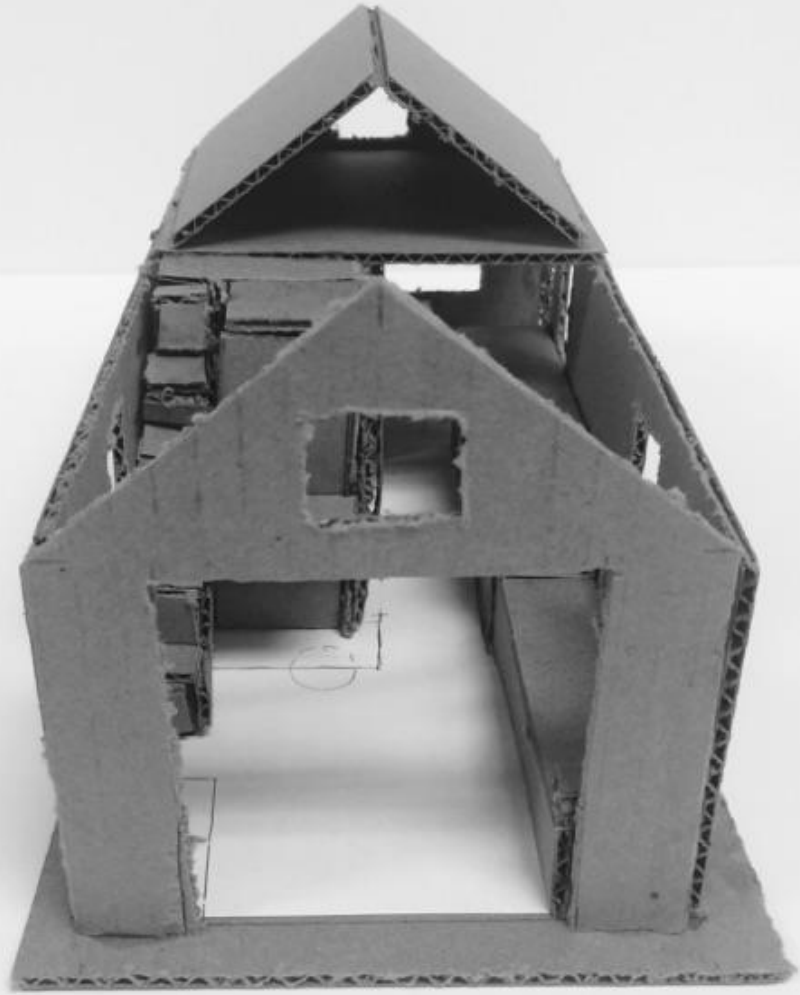
# Study Model #1

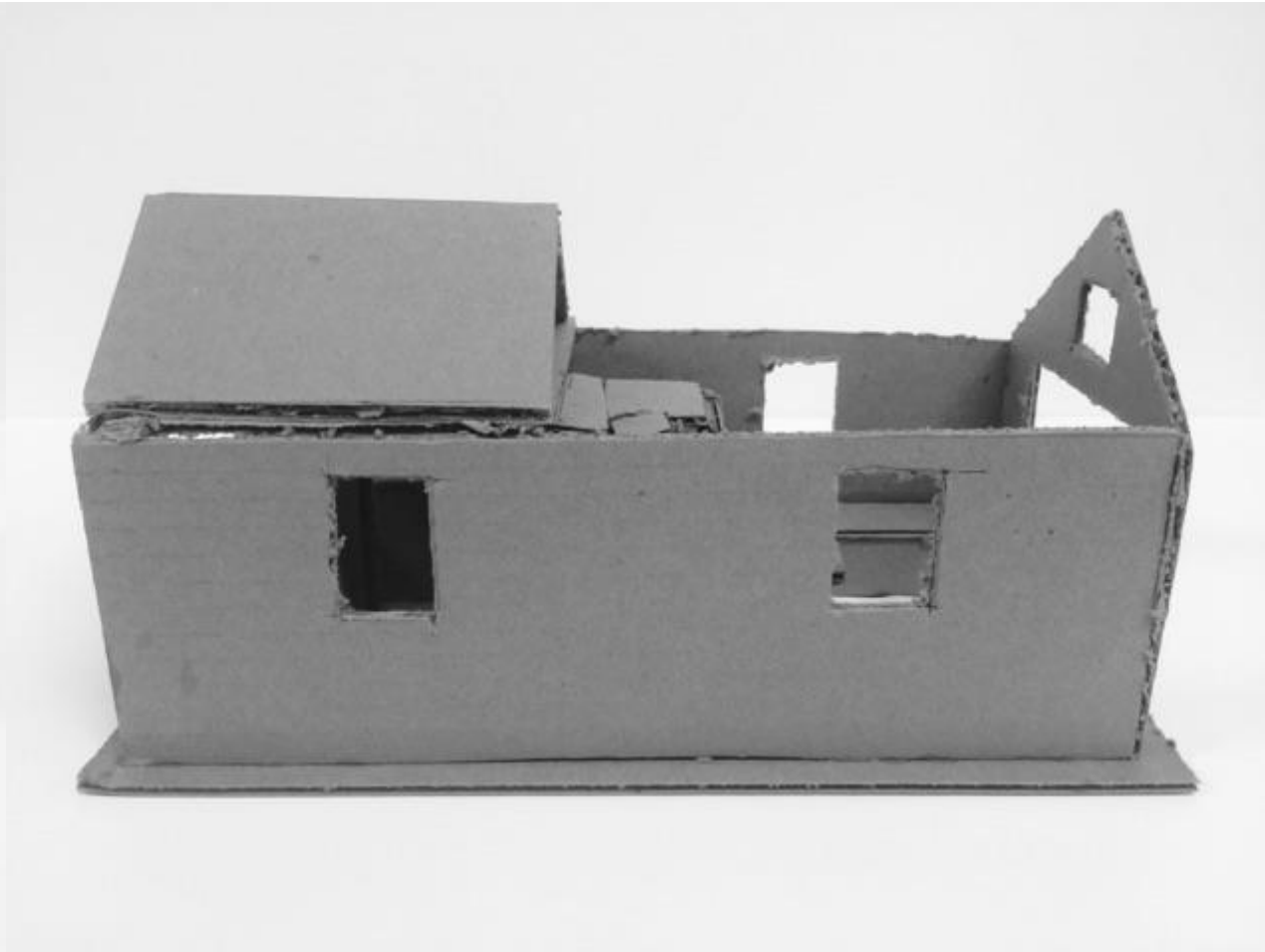
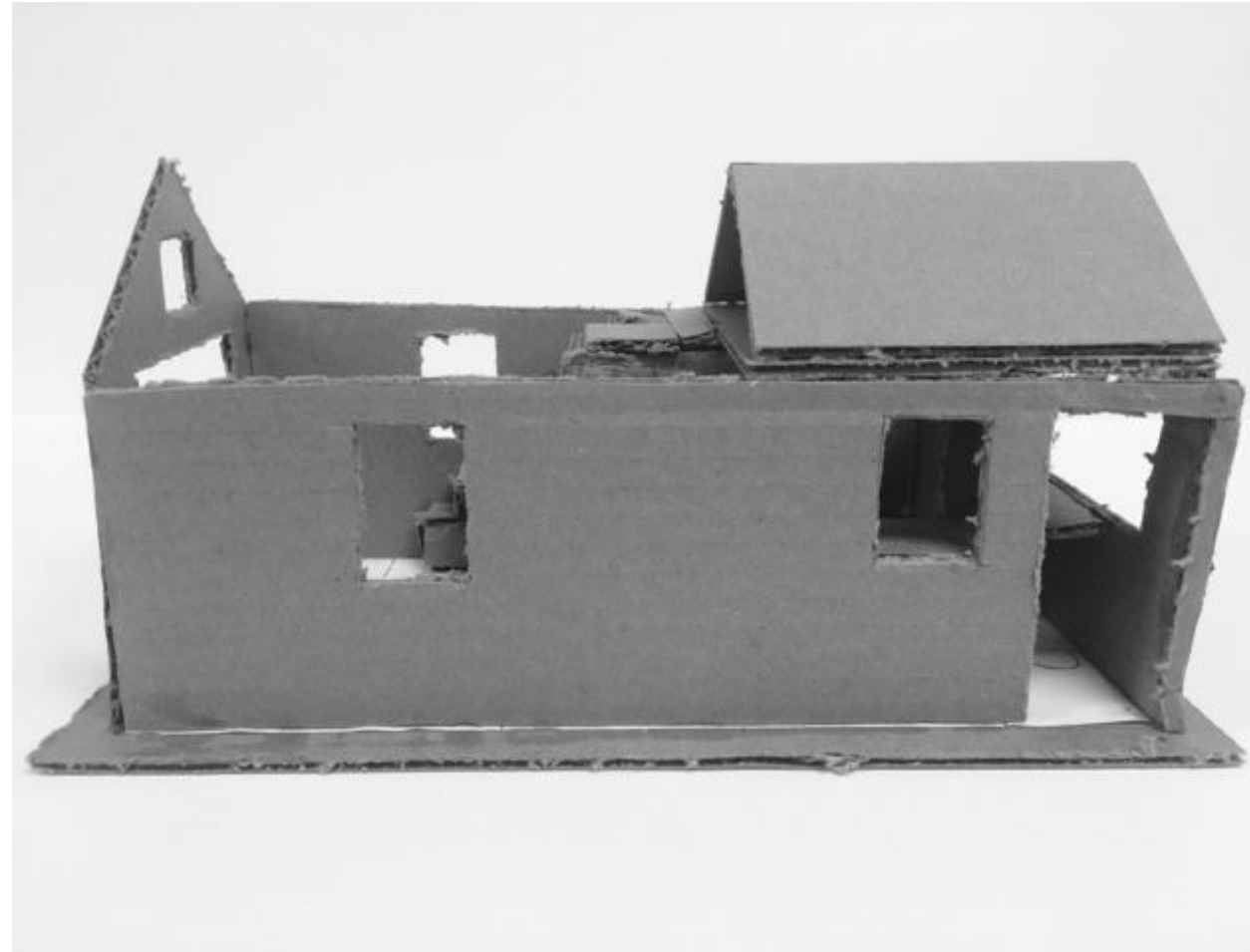






# Study Model #2

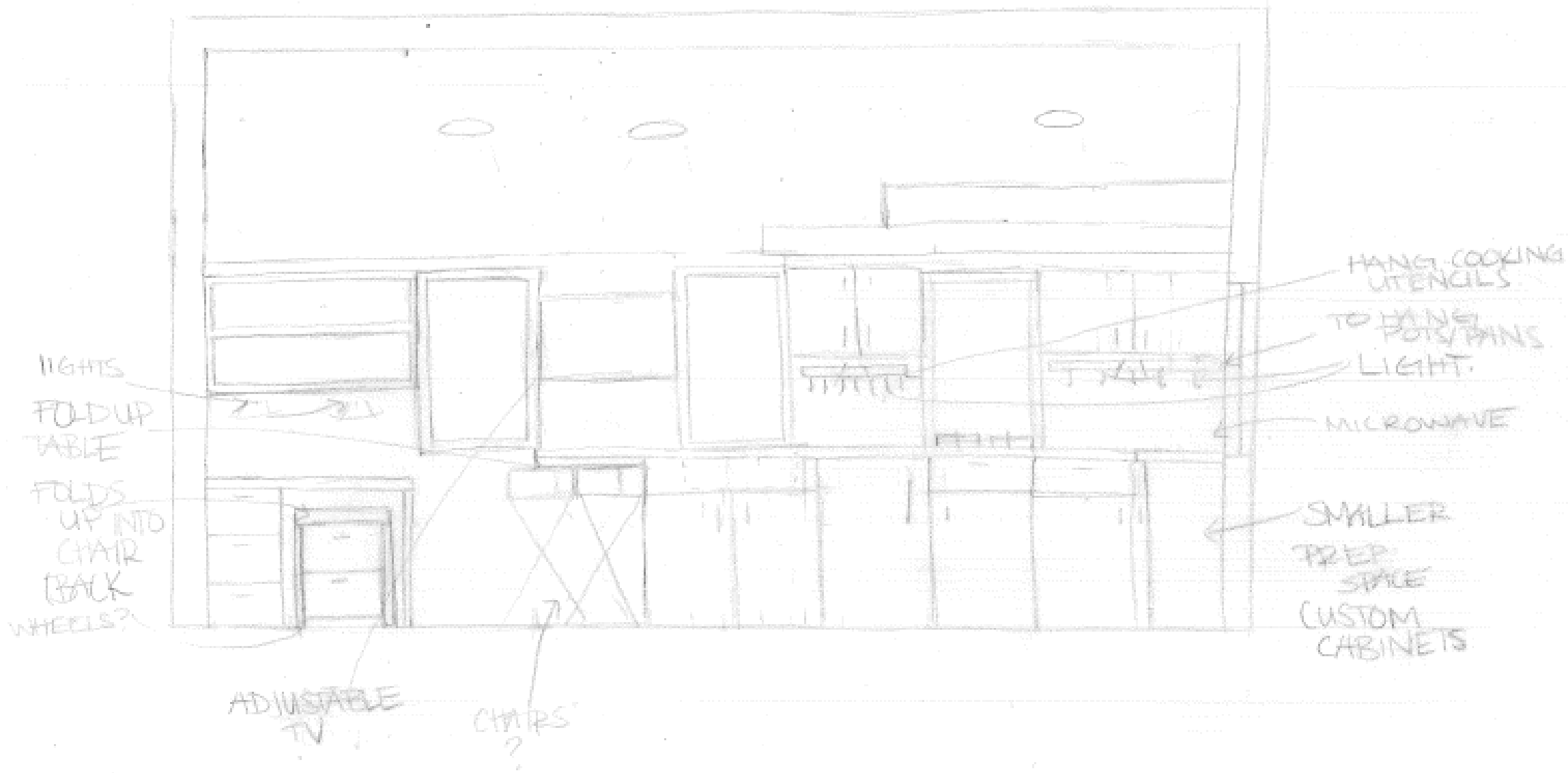




Selective Drawings:



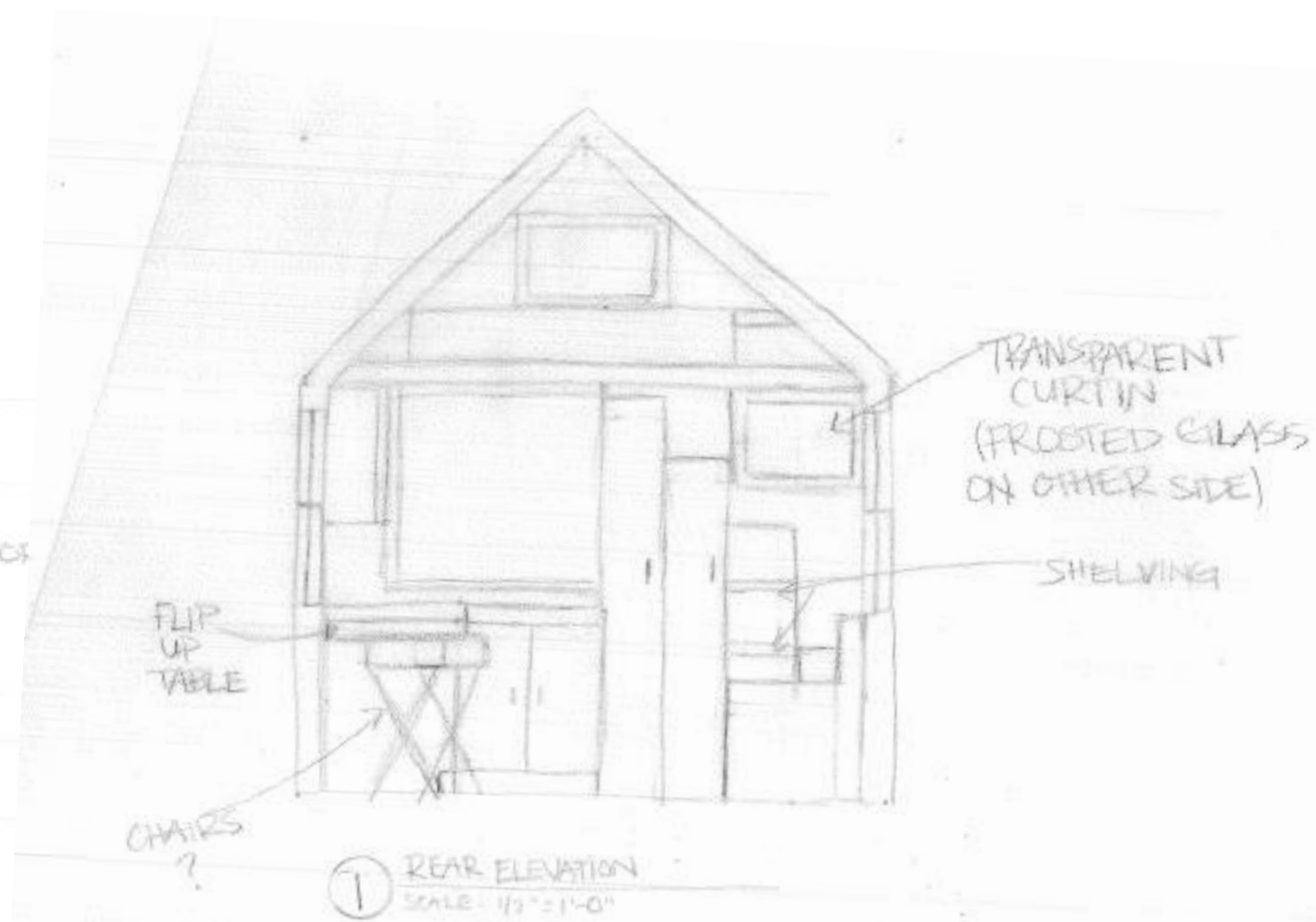
# Loose Elevations



1 LEFT WALL ELEVATION  
 SCALE: 1/2" = 1'-0"



① ENTRY ELEVATION  
SCALE: 1/2" = 1'-0"

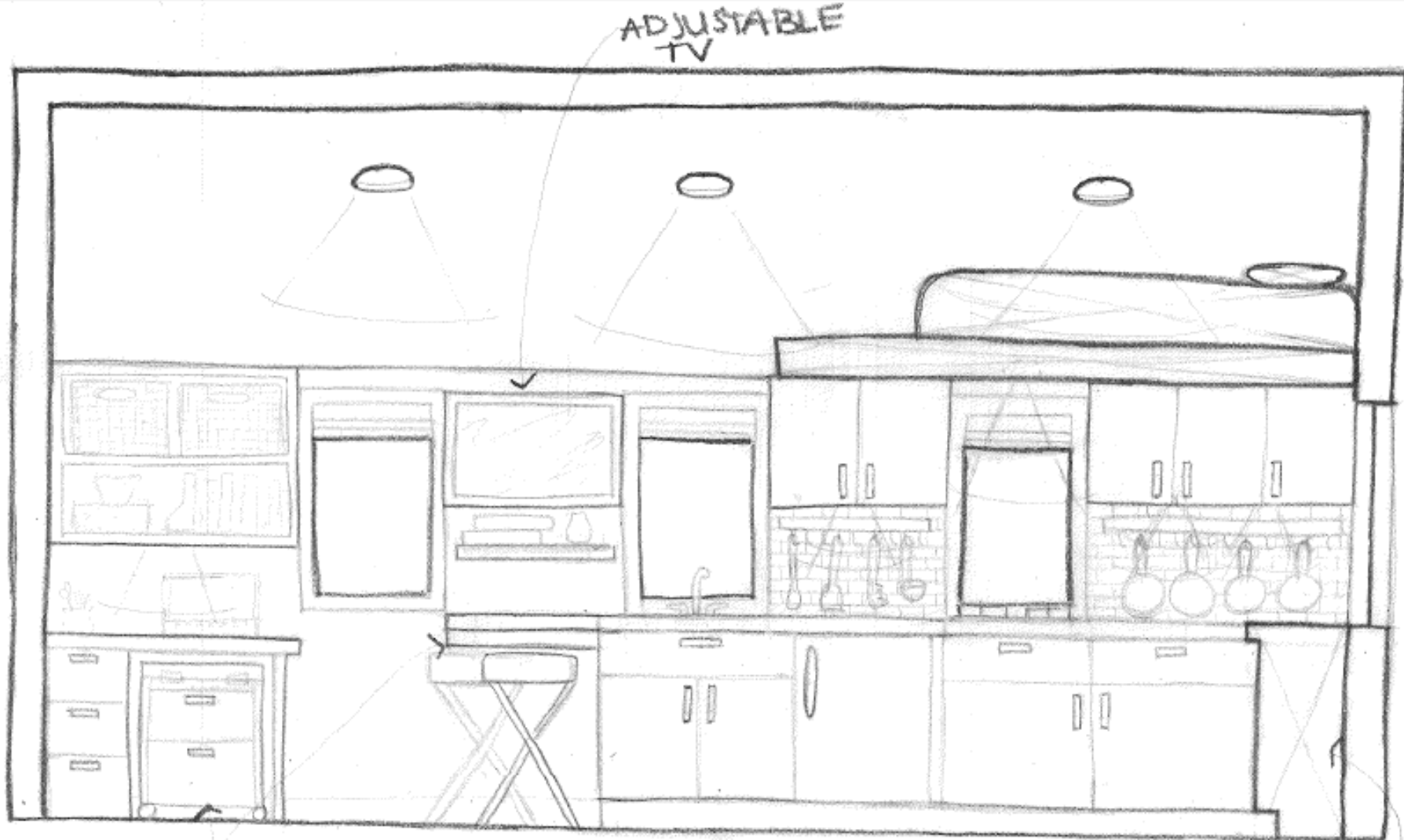


① REAR ELEVATION  
SCALE: 1/2" = 1'-0"



① RIGHT WALL ELEVATION  
SCALE: 1/2" = 1'-0"

# Final Elevations



ADJUSTABLE  
TV

FOLD UP  
TABLE

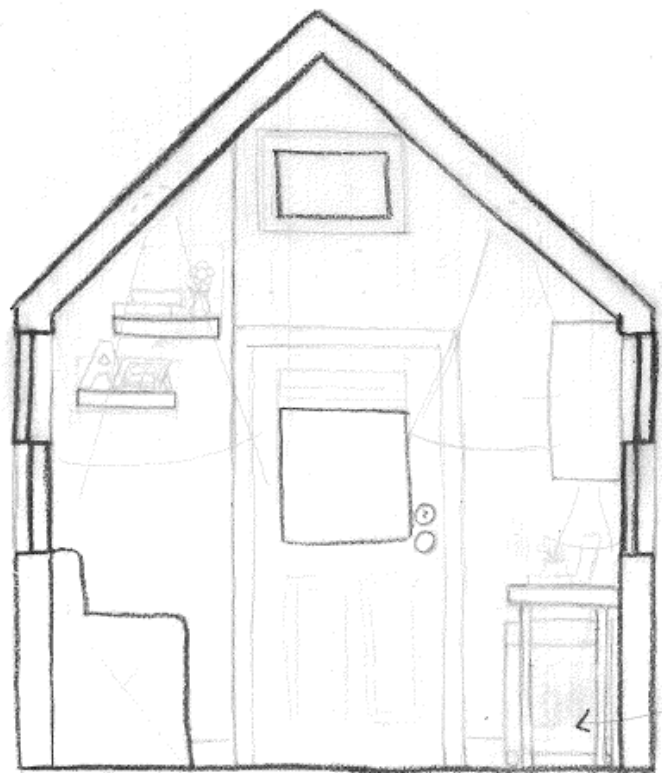
TOP OF CHAIR  
FOLDS UP INTO  
BACK / DRAWERS  
ON BOTTOM



LEFT WALL ELEVATION

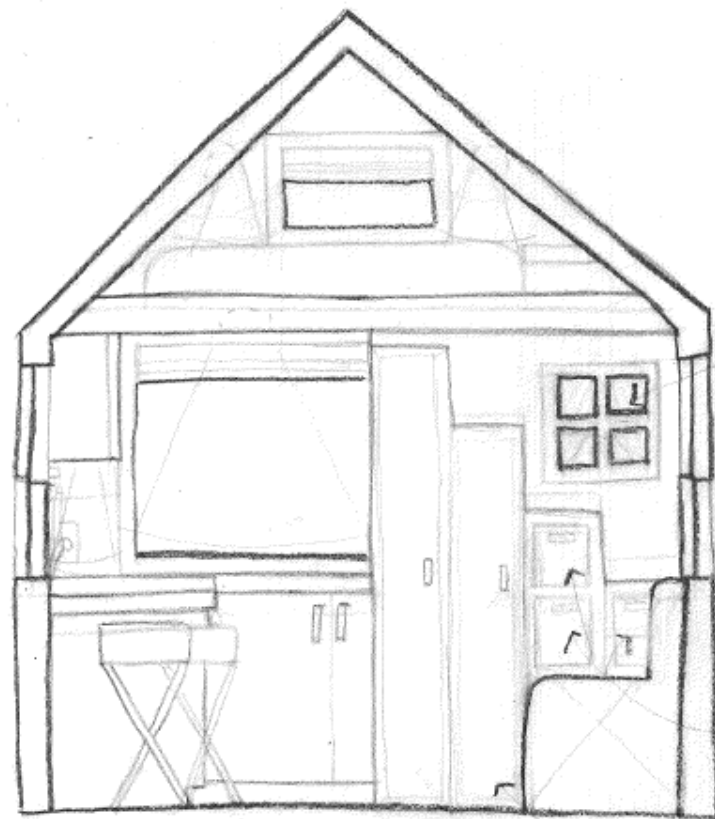
SCALE: 1/2" = 1'-0"

SMALLER  
PREP SPACE  
(CUSTOM)



FOLD UP  
CHAIR TO  
TUCK UNDER  
DESK WHEN  
NOT USED.

1 ENTRY ELEVATION  
SCALE: 1/2" = 1'-0"



TRANSPARENT  
CURTAIN IN  
BATH / FROSTED  
GLASS 1' DOWN  
FROM CEILING  
ON WALL ACROSS  
IN BATH (TO SEE  
MORE LIGHT OF  
BIG WINDOW IN  
BACK OF HOUSE.

DRAWERS

CABINETS.

1 REAR ELEVATION  
SCALE: 1/2" = 1'-0"



CURTAIN TO COVER STORAGE

3 ft. of construction display wall located inside closet.

SMALLER PREP SPACE (CUSTOM)

DRAWERS

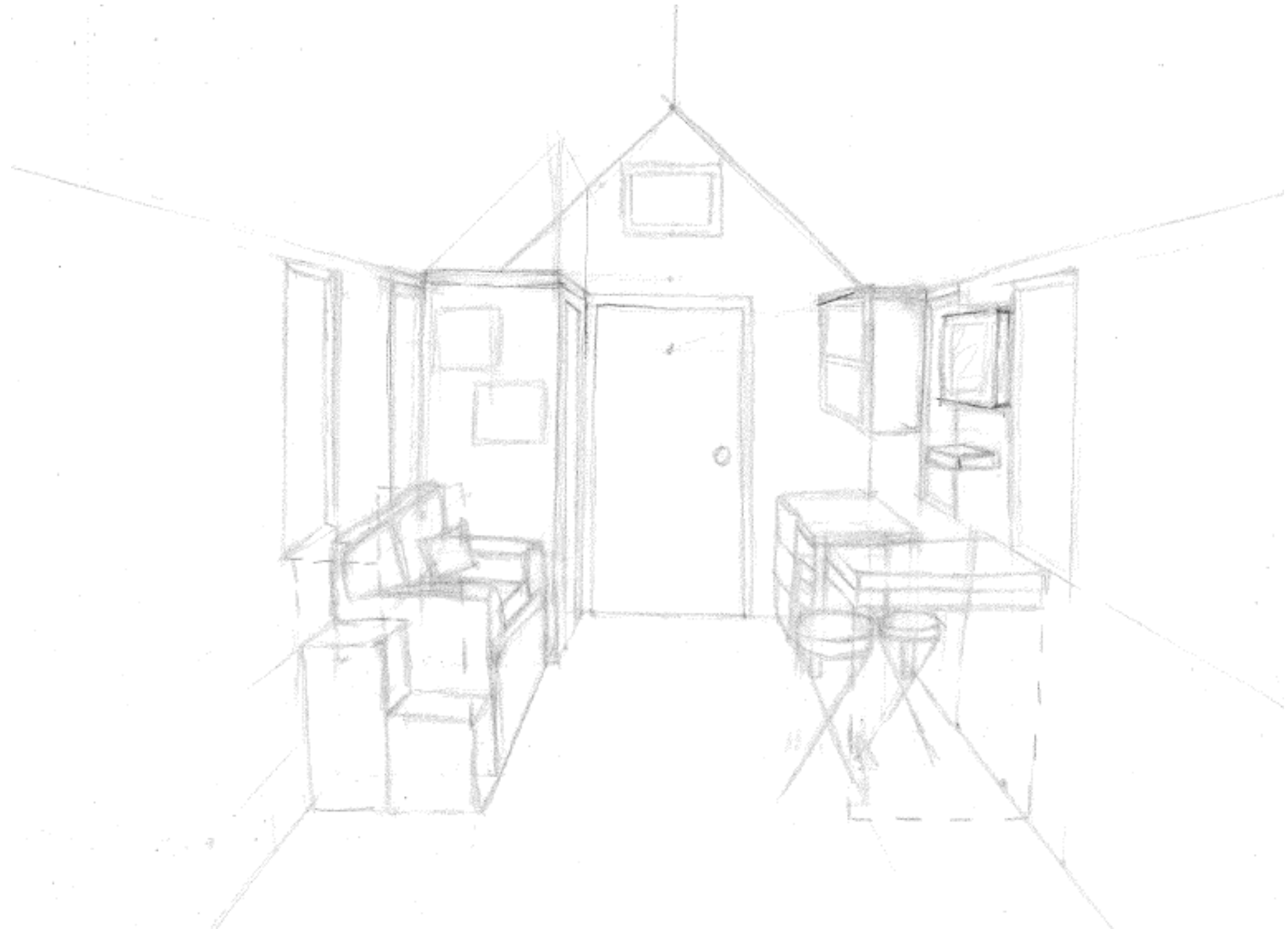
1 RIGHT WALL ELEVATION  
SCALE: 1/2" = 1'-0"

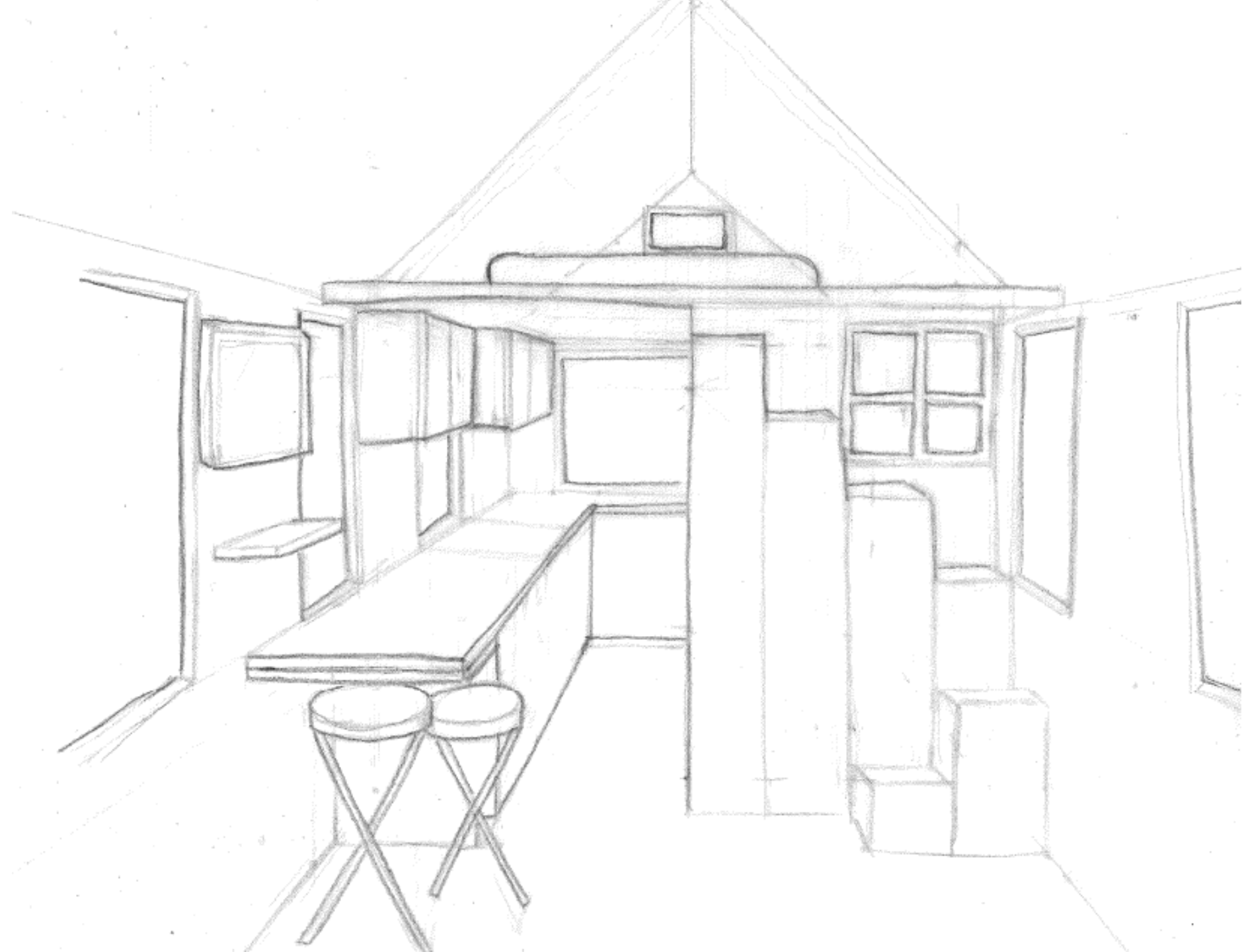
DRAWER UNDER SOFA

LADDER TO GET TO STORAGE

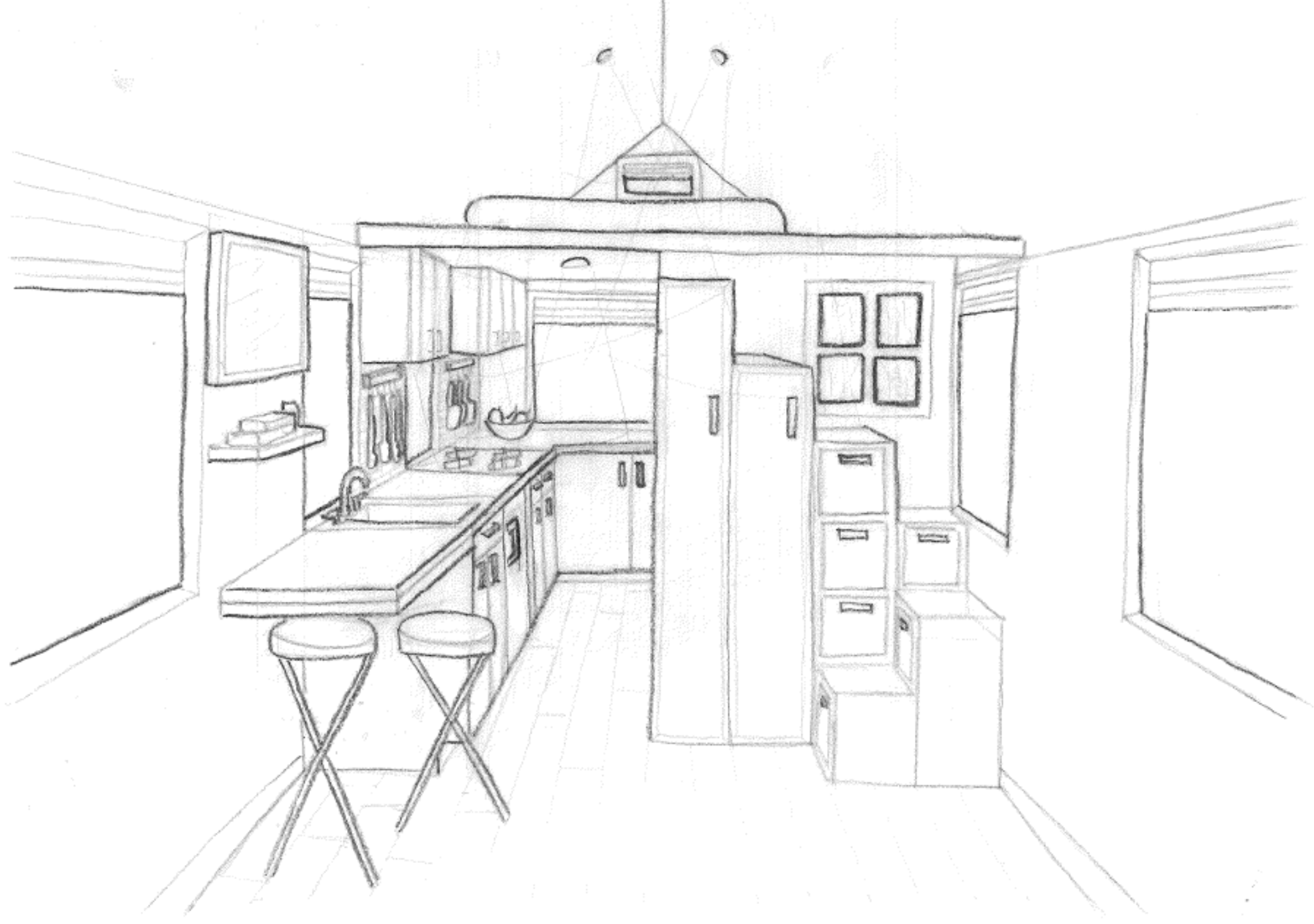


# Loose Perspectives



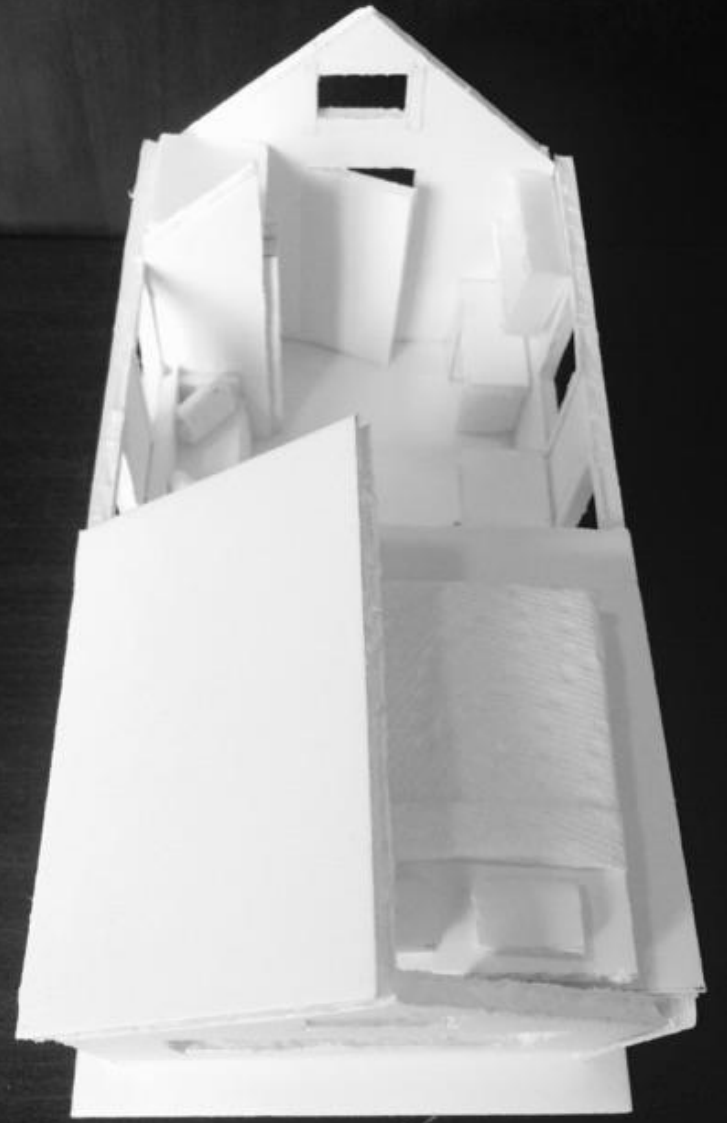
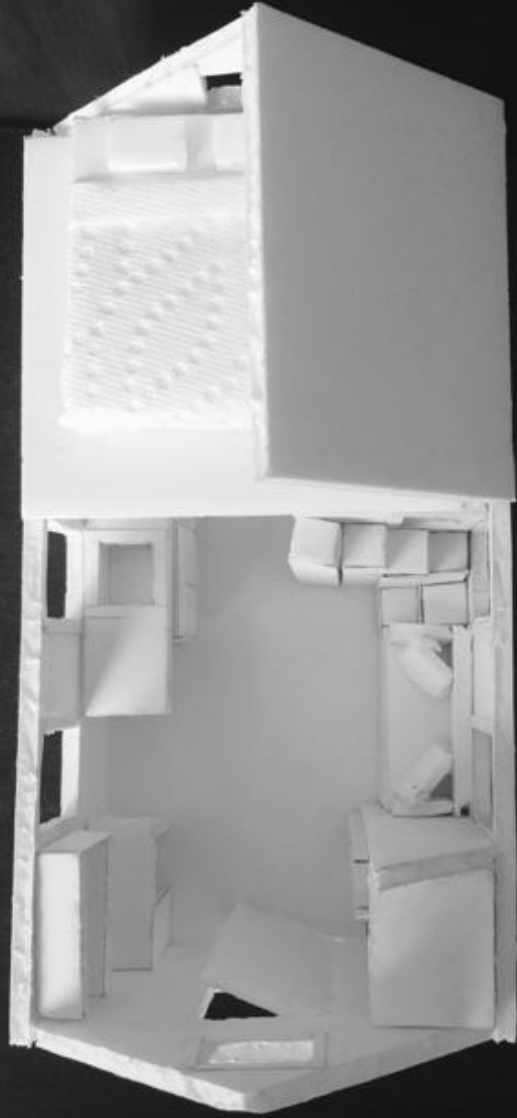


# Final Perspectives

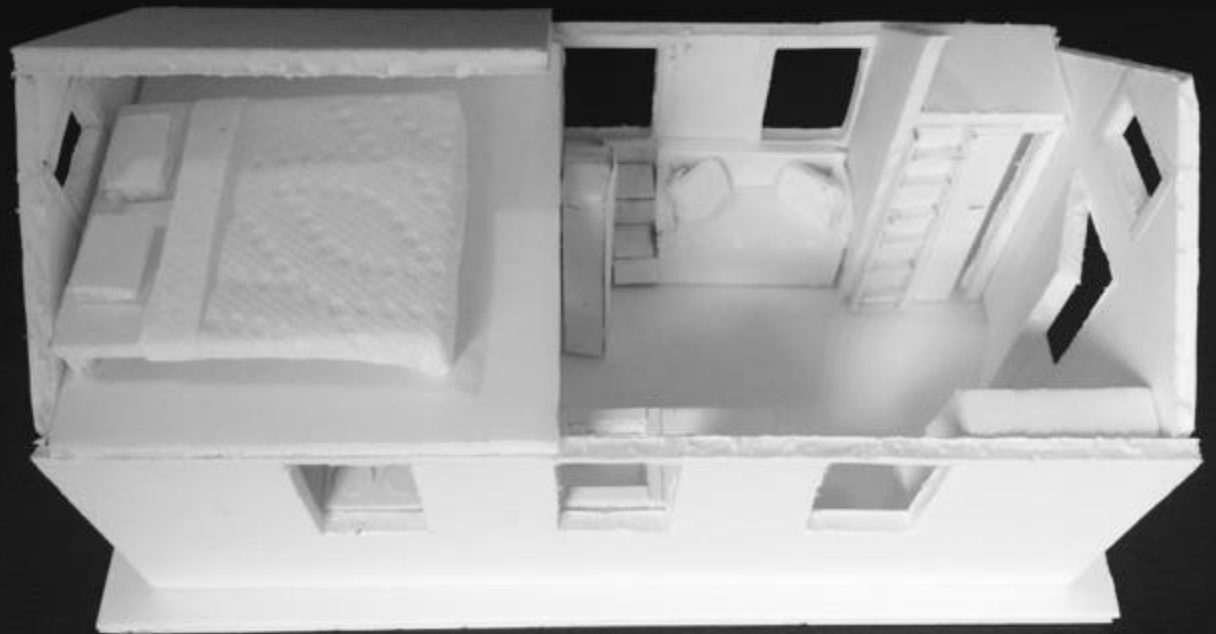




Final Model







# Inspiration Photos



Stairs



Sofa

# Finishes and Materials



Backsplash



Wooden Blinds



Recessed lighting



Wood flooring