

TINY HOUSE

MARISSA LADA

PROJECT OVERVIEW

This home, deemed the “Tiny House” has a 19’ x 8’ frame, making the square footage 152. The ceiling height is 6’3”, with a loft that extends an additional 3’8”. A 7.5’ x 3’ porch is located outside the entrance of the home. The purpose of the space is to create versatility and multi-functionality through the use of architectural and non-architectural elements.

The clients are a young married couple who wish to have all the basic needs of living met as well as having an Urban Chic look to the space.

DESIGN CONCEPT

The main idea behind this design was stylish functionality. The necessities of basic living are met while still pertaining to the wants of the clients. Built-ins and fixtures placed along the perimeter of the home offer storage space as well as take up minimal floor space to maximize the use of space in other aspects. Dividing the bathroom into three individual spaces which share two sliding doors still meet the basic needs of individuals, while offering more privacy as well as allowing each space to be used simultaneously. A built-in along the back wall functions as an entertainment center, but the hidden drop leaf table located in the piece allows it to function as a dining table as well. A ladder leads up to the loft, which houses the bed, which has built-in storage drawers underneath the bed as well as nightstand drawers off the sides.

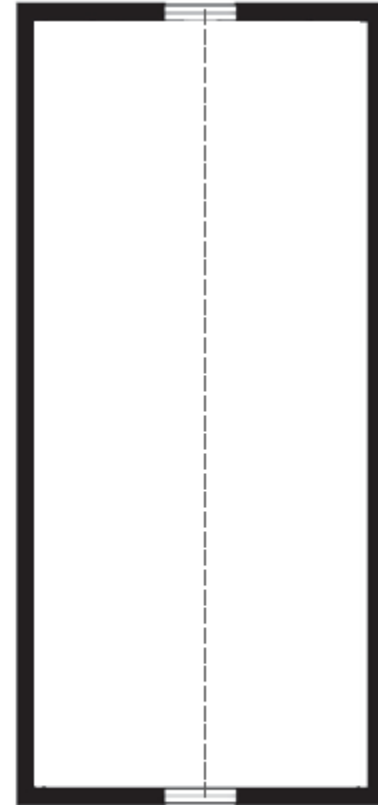
To still meet the clients wants, and not just needs in the space, an urban chic look is established through minimal use of pattern and neutral colors, with a few green accents. Circular and linear shapes coexist through the use of wall art and furniture selection and the minimal use of color makes the space seem larger, as well as the use of mirrors to reflect light throughout the space.

EXISTING FLOOR PLAN

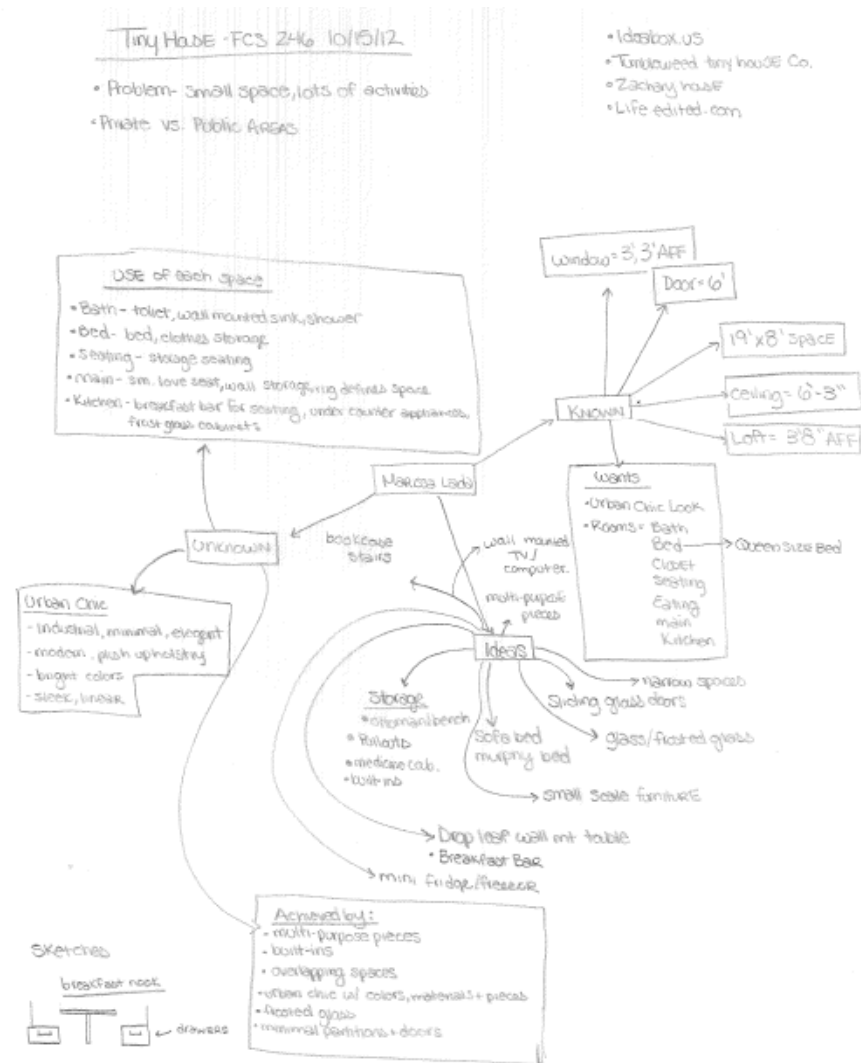
▶ Main floor



▶ Loft

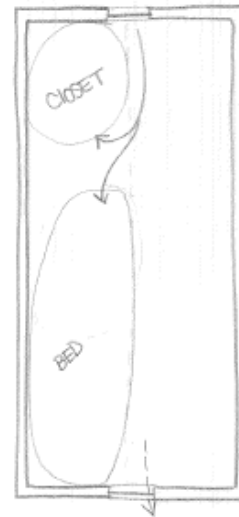
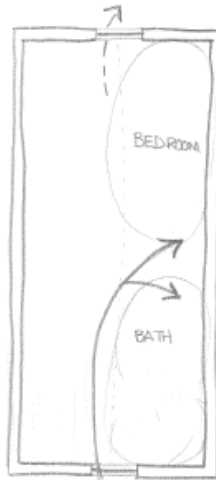
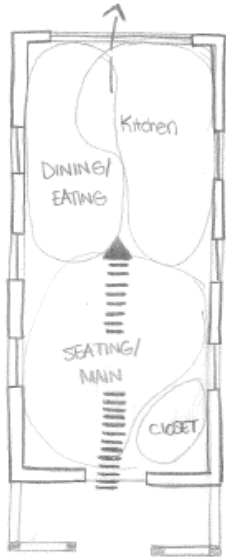


PROCESS-CONCEPT DIAGRAM

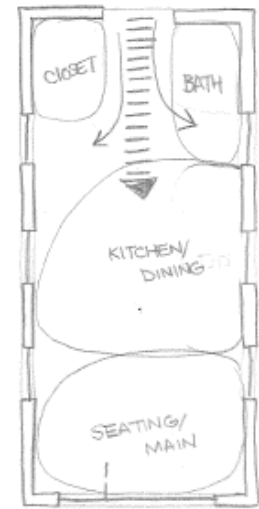


PROCESS-BUBBLE DIAGRAMS

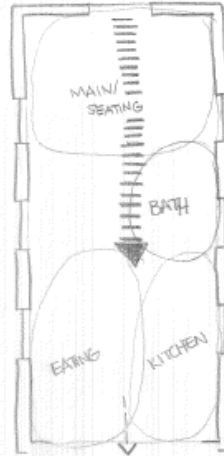
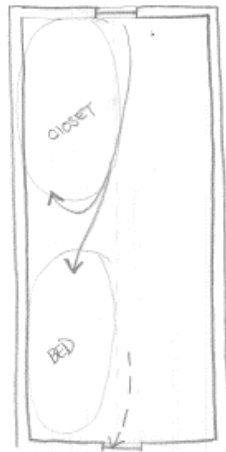
Bubble Diagram #1



Bubble Diagram 3



Bubble Diagram #2



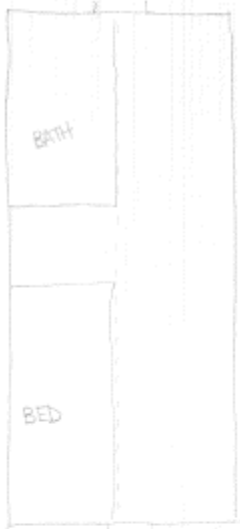
Bubble Diagram 4



Bubble Diagram 5



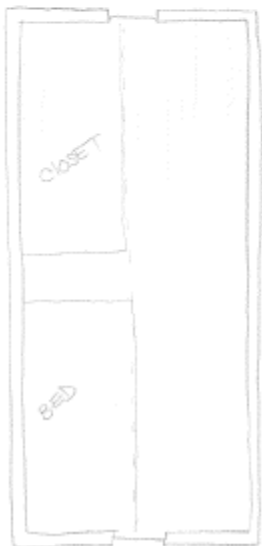
PROCESS-BLOCK DIAGRAMS



Block Diagram #1



Block Dia #3



Block Diagram #2

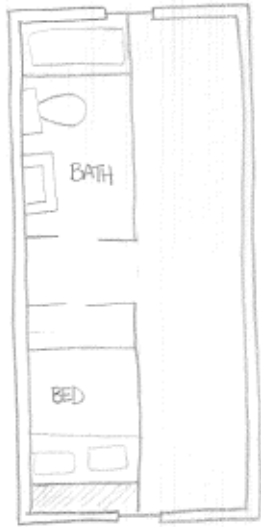


Block #4

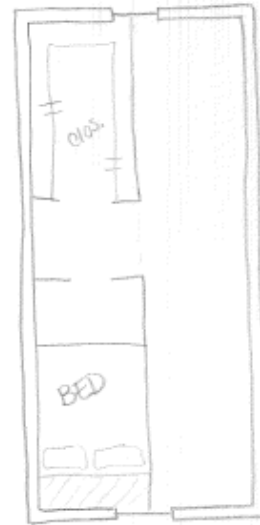


Block #5

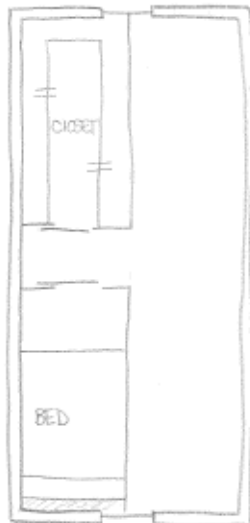
PROCESS-LOOSE DIAGRAMS



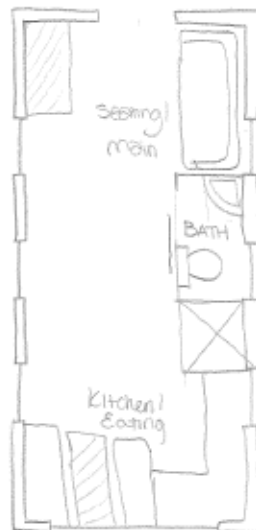
LOOSE PLAN 1
↔



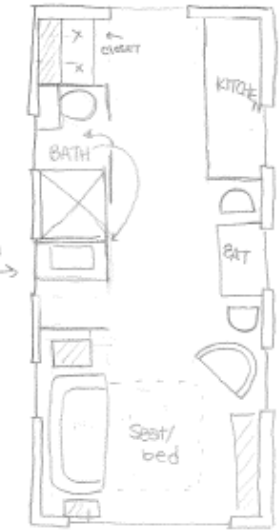
LOOSE PLAN 3
↔



LOOSE PLAN #2
↔



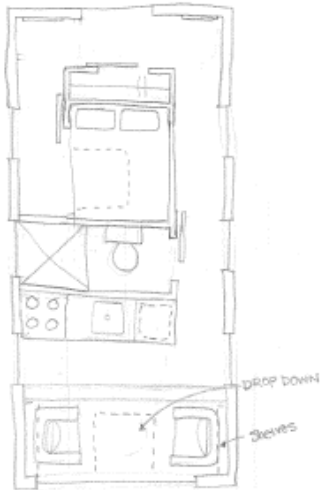
LOOSE PLAN 4
↔



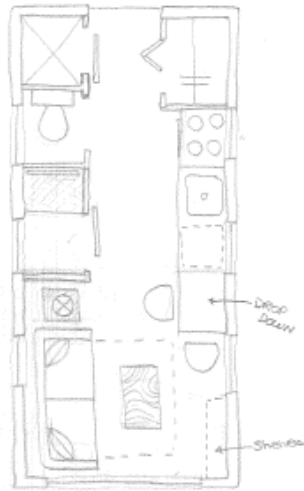
LOOSE PLAN 5
↔

PROCESS-REFINED PLANS

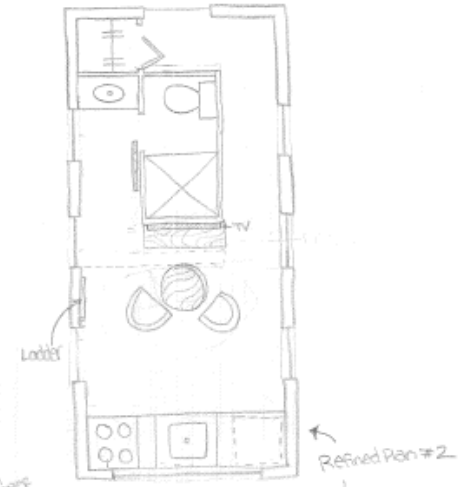
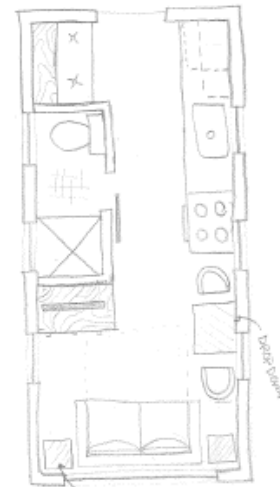
Refined floor plan 4



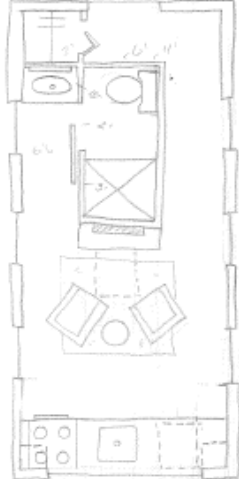
Refined Floor Plan 5



Refined Plan #1



NEW FLOOR PLAN 1



NEW FLOOR PLAN 2

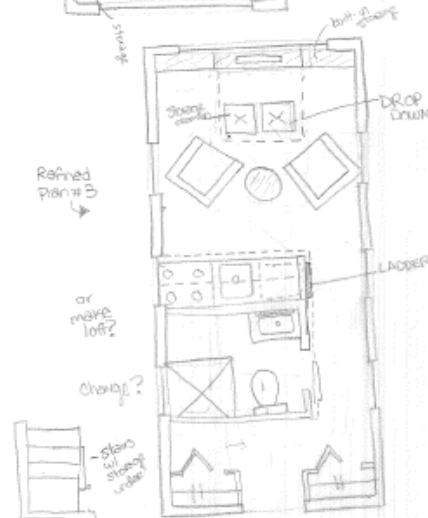


NEW FLOOR PLAN 3



2x8

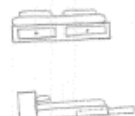
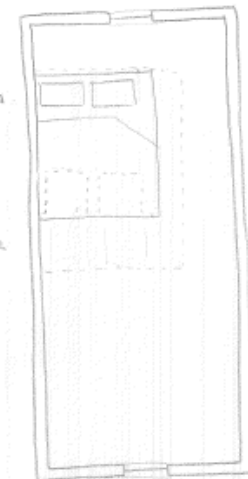
Refined Plan #3



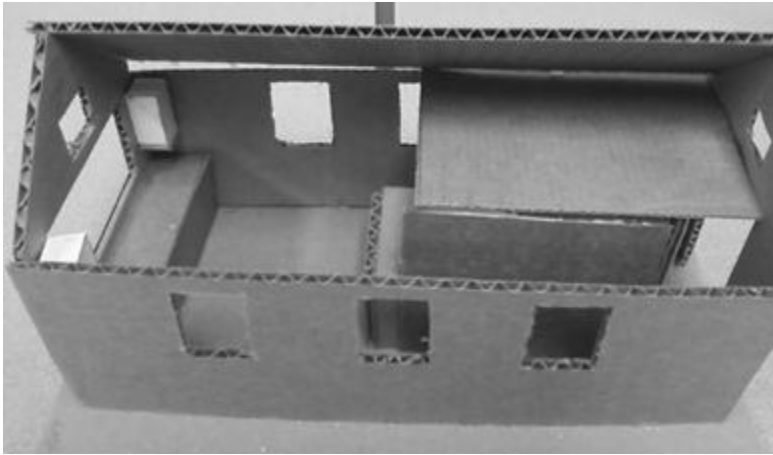
or more loft?
change?



Refined Plan #2



STUDY MODELS

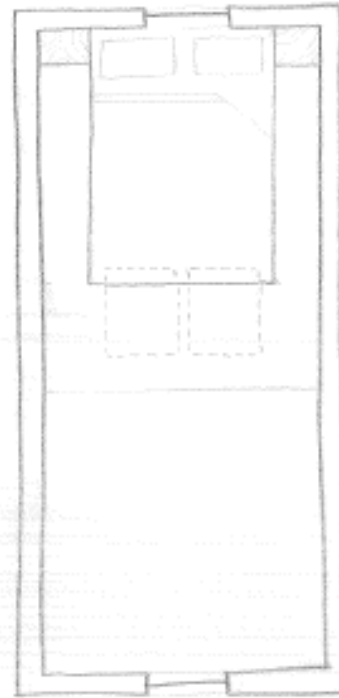


FLOOR PLAN



MAIN FLOOR PLAN

SCALE: 1/4" = 1'-0"



LOFT FLOOR PLAN

SCALE: 1/4" = 1'-0"

ELEVATIONS



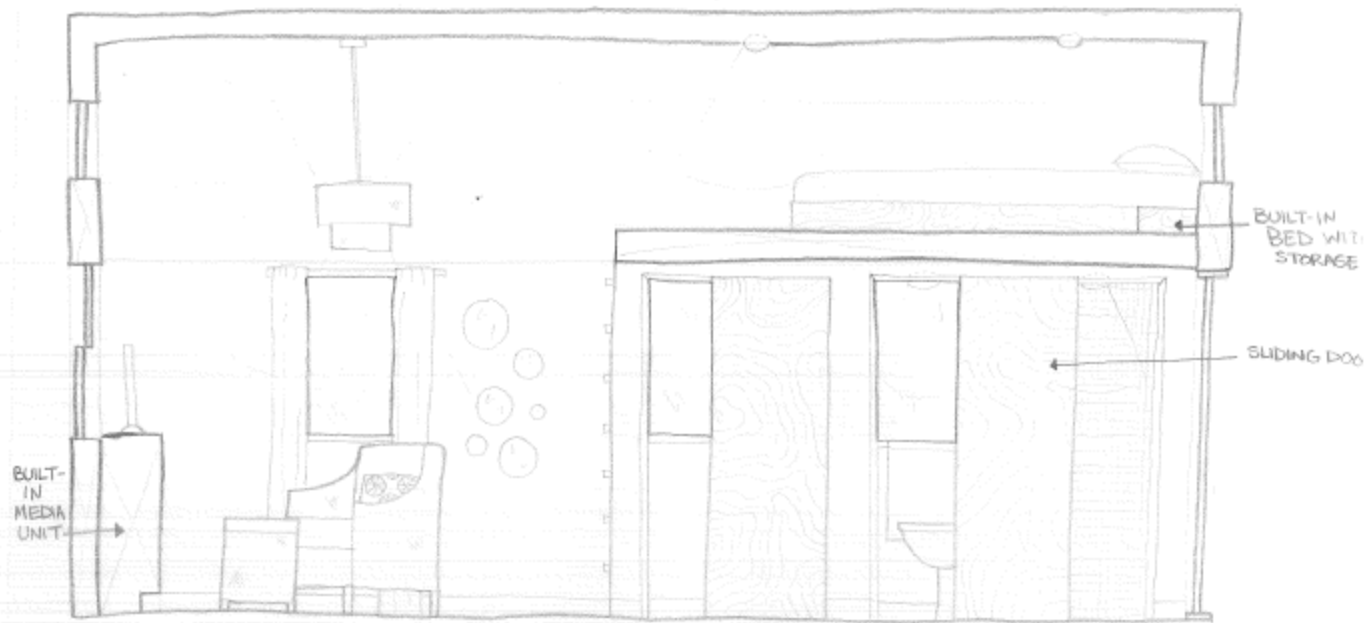
RIGHT-SIDE ELEVATION

SCALE = 1/2" = 1'-0"

BUILT-IN
MEDIA UNIT
WITH
DROP LEAF
TABLE

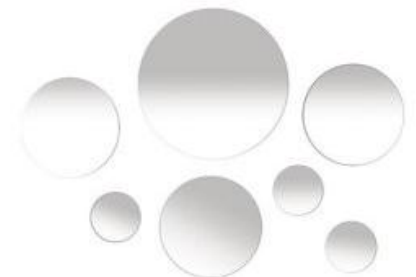


ELEVATIONS

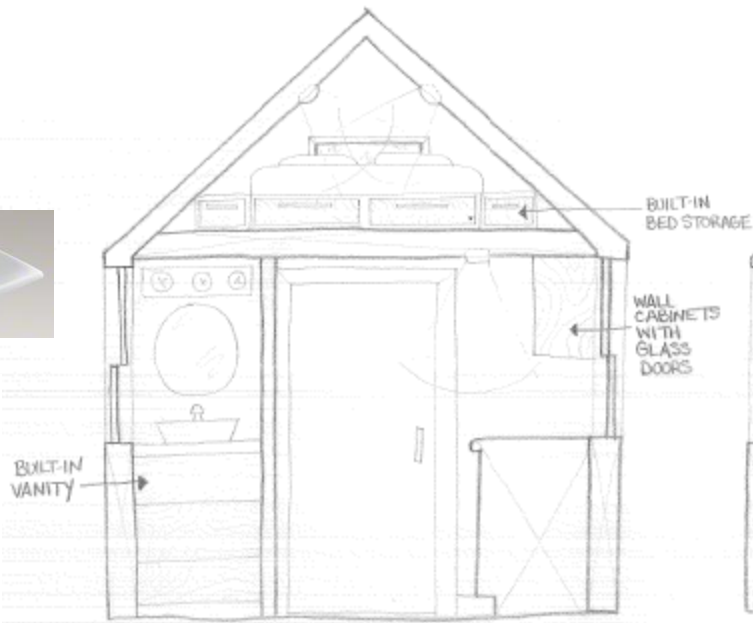


LEFT-SIDE ELEVATION

SCALE = 1/2" = 1'-0"

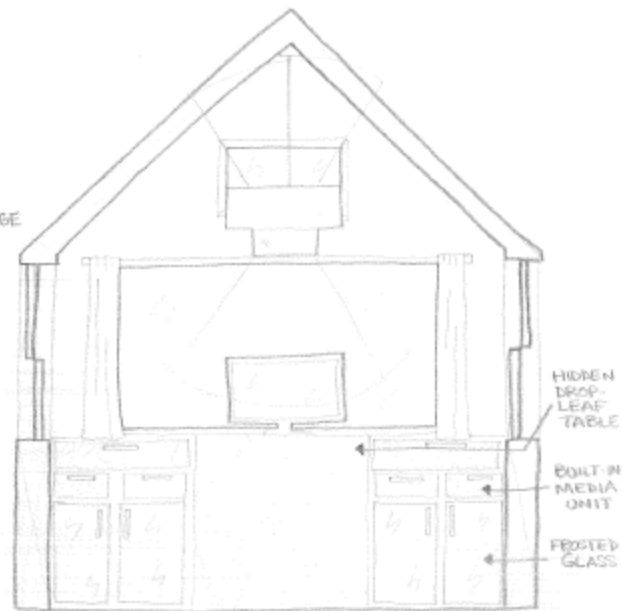


ELEVATIONS



FRONT-END ELEVATION

SCALE = 1/2" = 1'-0"

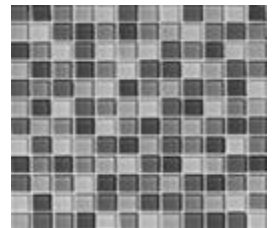
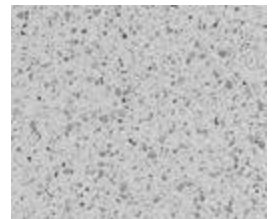
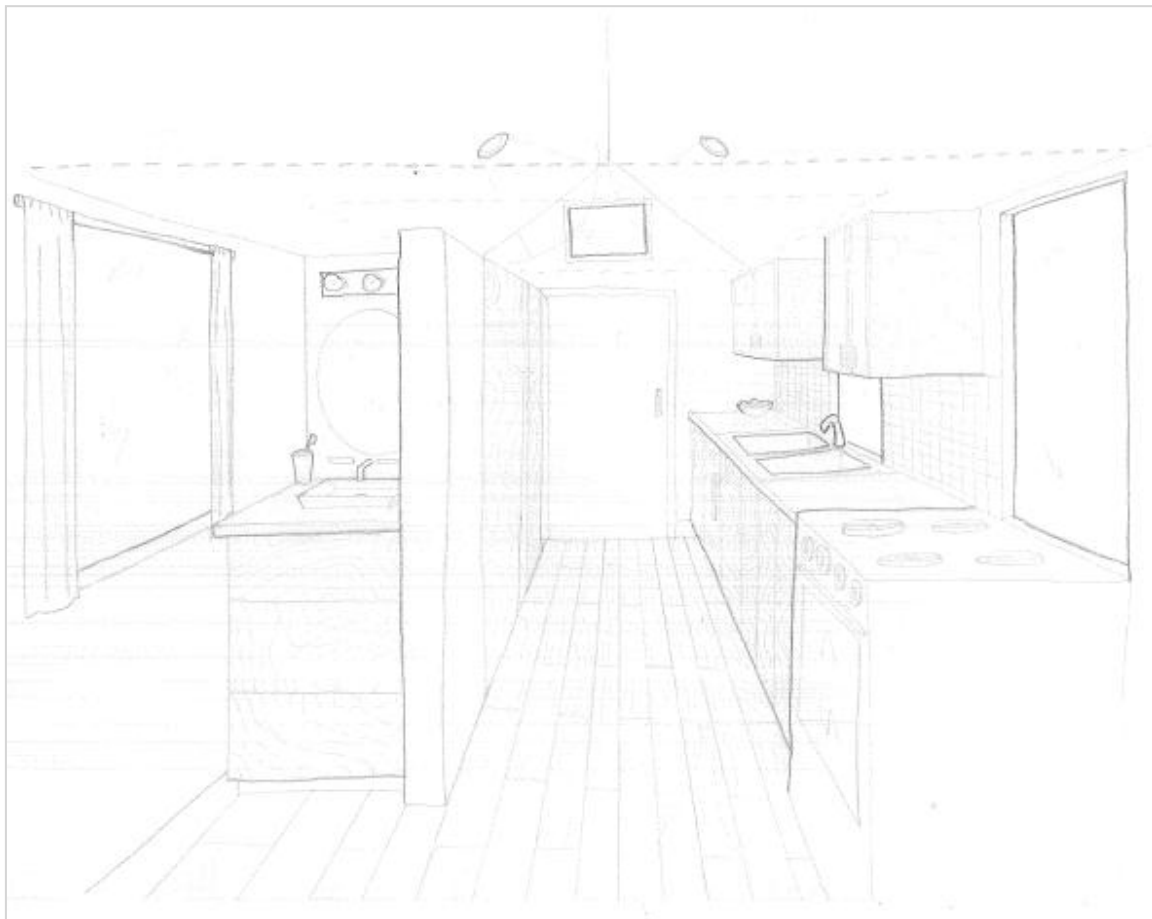


BACK-END ELEVATION

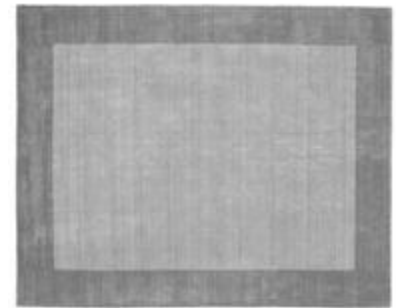
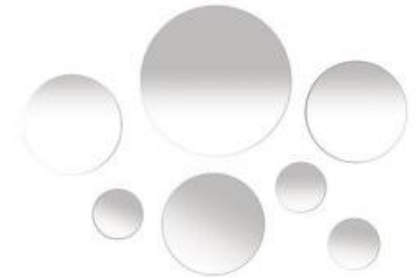
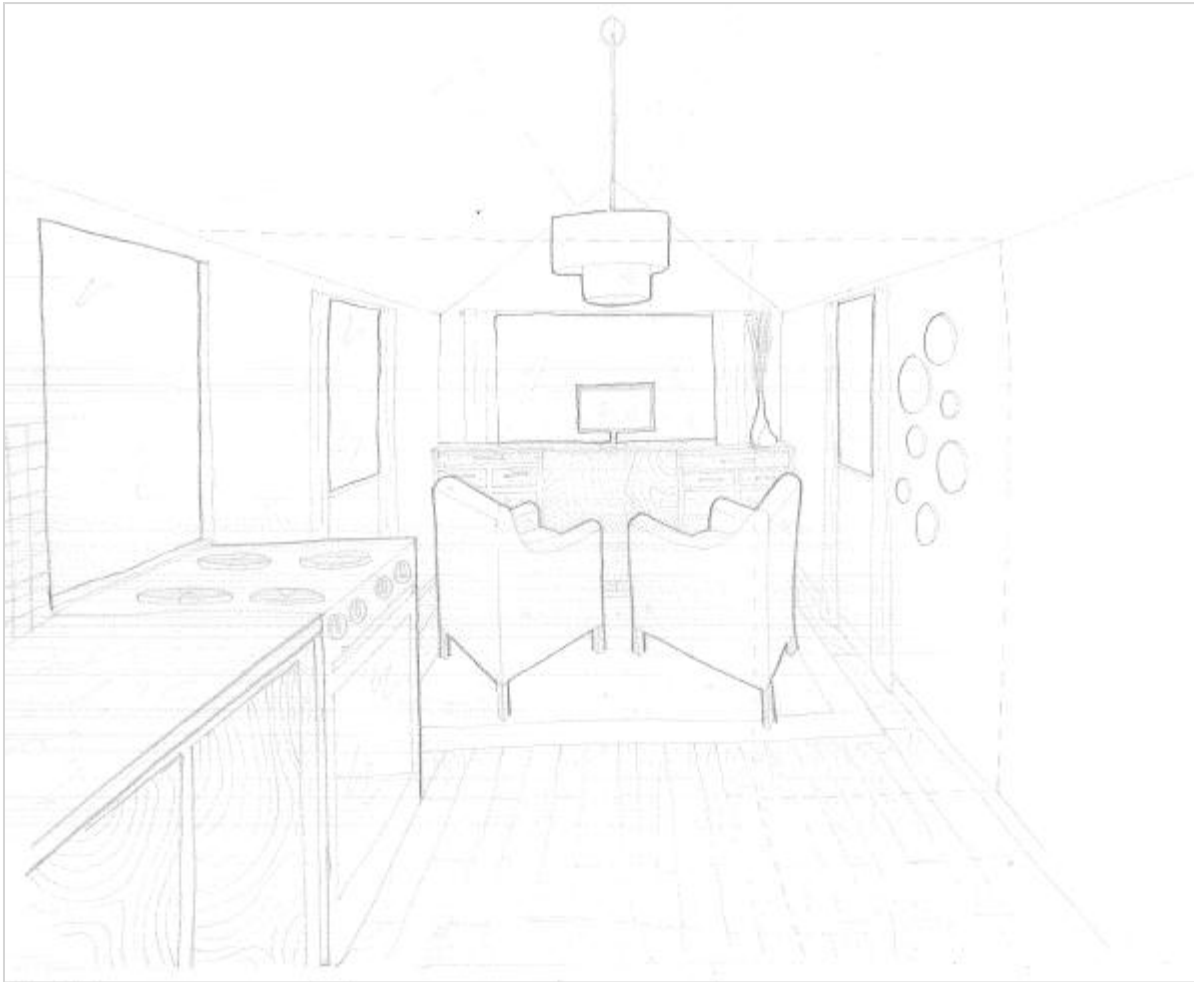
SCALE = 1/2" = 1'-0"



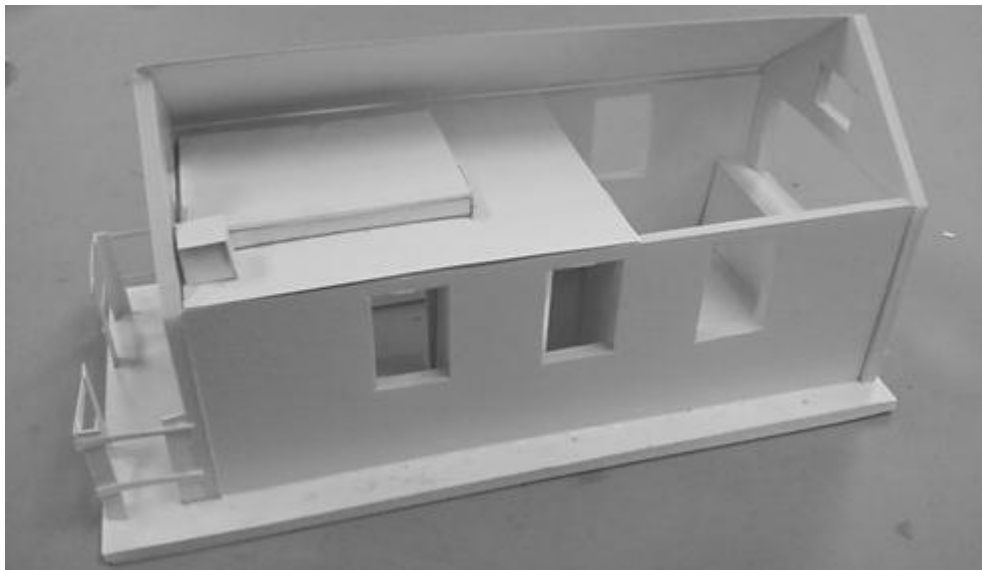
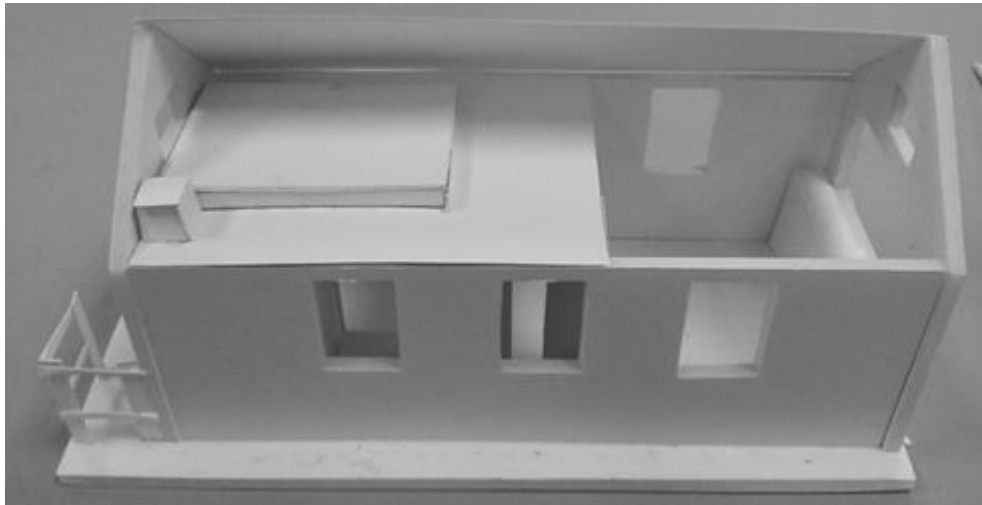
PERSPECTIVES



PERSPECTIVES



MODEL



FINISHES AND MATERIALS

