



TINY HOUSE

Sara
Armeanu



INSPIRATION



PROJECT OVERVIEW

Dimensions

Footprint: 19' x 8'

Ceiling: 6'- 3"

Loft: 3'- 8"

Bathroom: 8' x 3'

Includes:

Main Room

Storage

Kitchenette

Eating Area

Bathroom

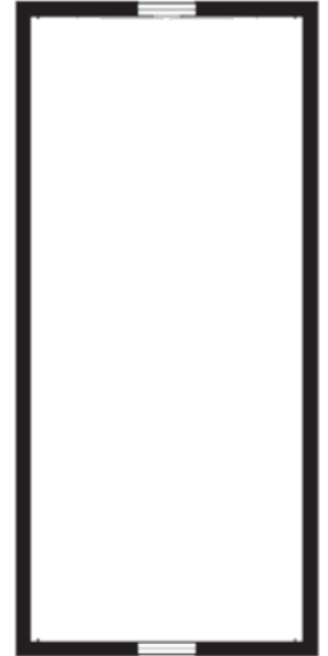
Bedroom

FLOOR PLAN

Main Area



Loft

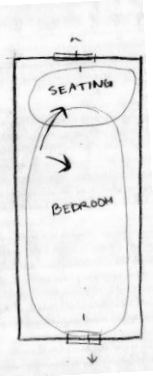
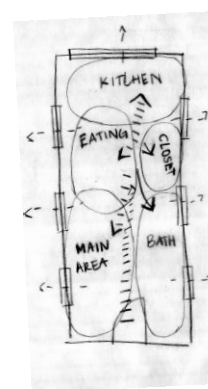
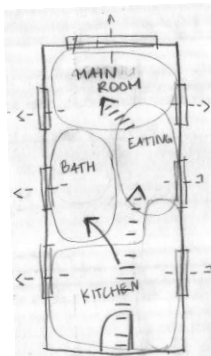
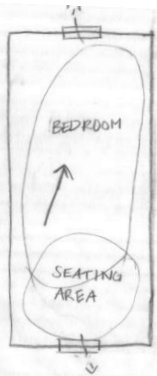
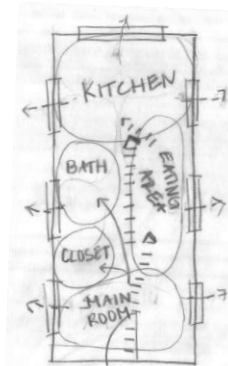
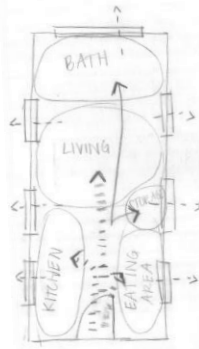
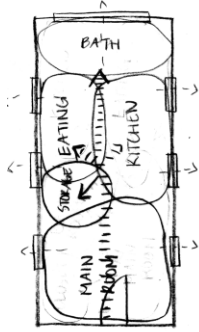


DESIGN CONCEPT

The tiny house was built for a couple who will be able to utilize the space to the maximum potential. The modern couple is looking for a design that specializes in bringing the outdoors inside, and this was done by having multiple uses of natural elements, such as wood panels, marble countertops, and marble subway tiles. The design also included furniture that was made from reclaimed materials. Biophilic design was also utilized by having open windows throughout the space and plants to bring a feeling closer to nature. In terms of design, there were multiple built-in storage options for the couple. The bathroom is also a wet room to utilize the best amount of space.

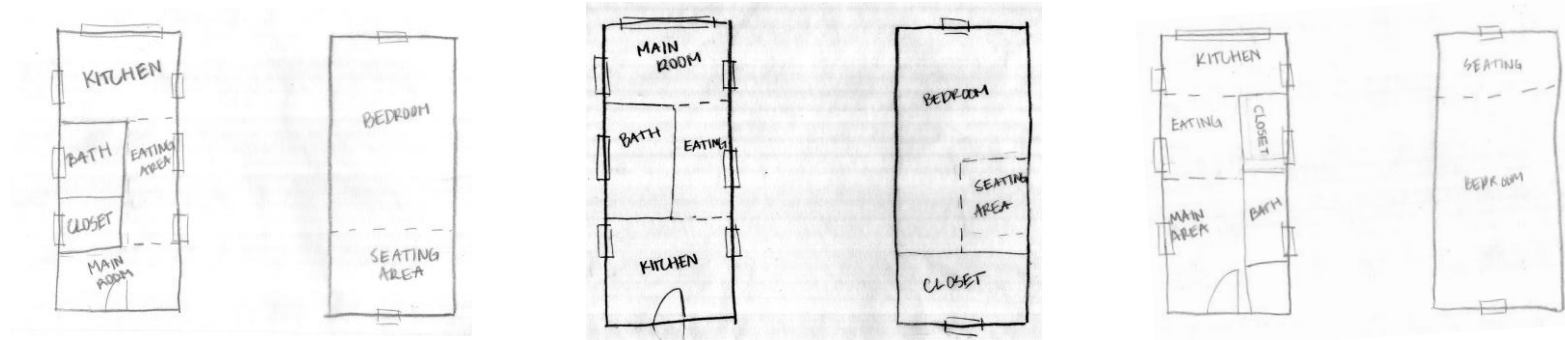
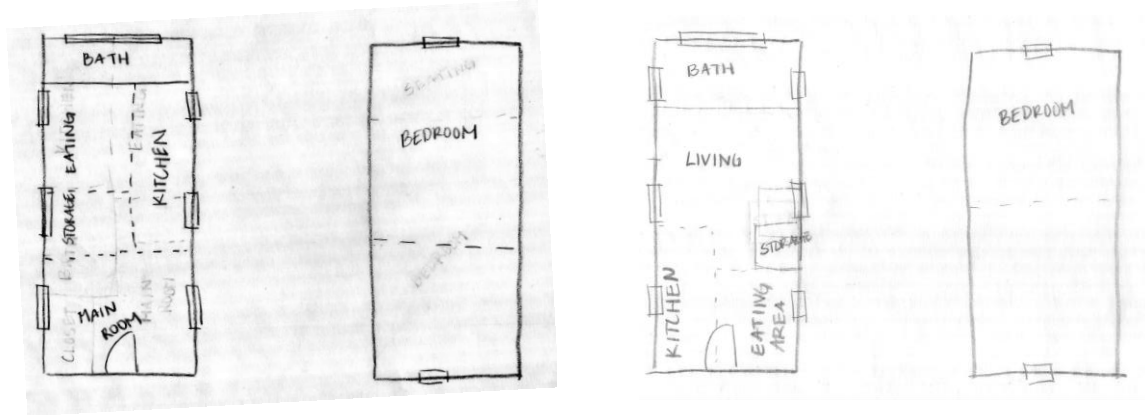
BUBBLE DIAGRAMS

MAIN DESIGN



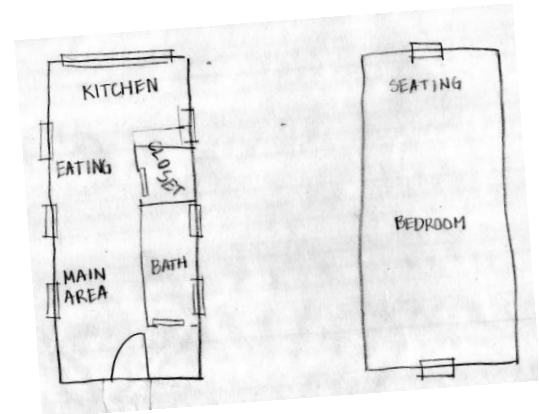
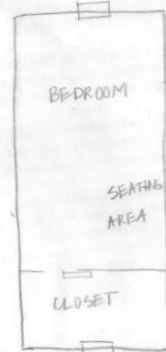
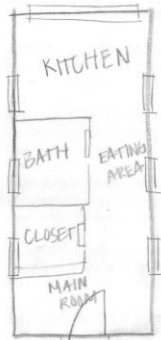
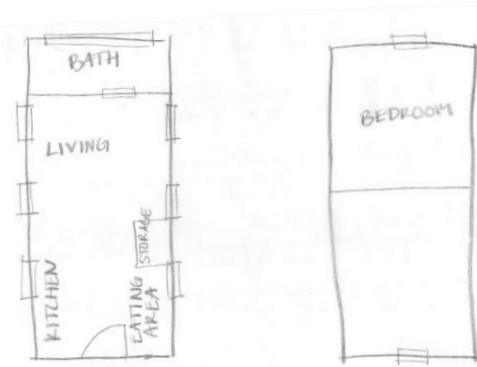
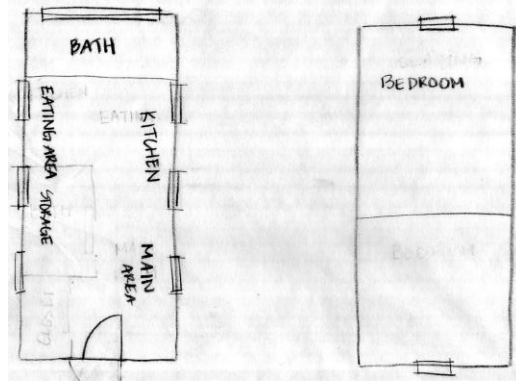
BLOCK DIAGRAMS

MAIN DESIGN

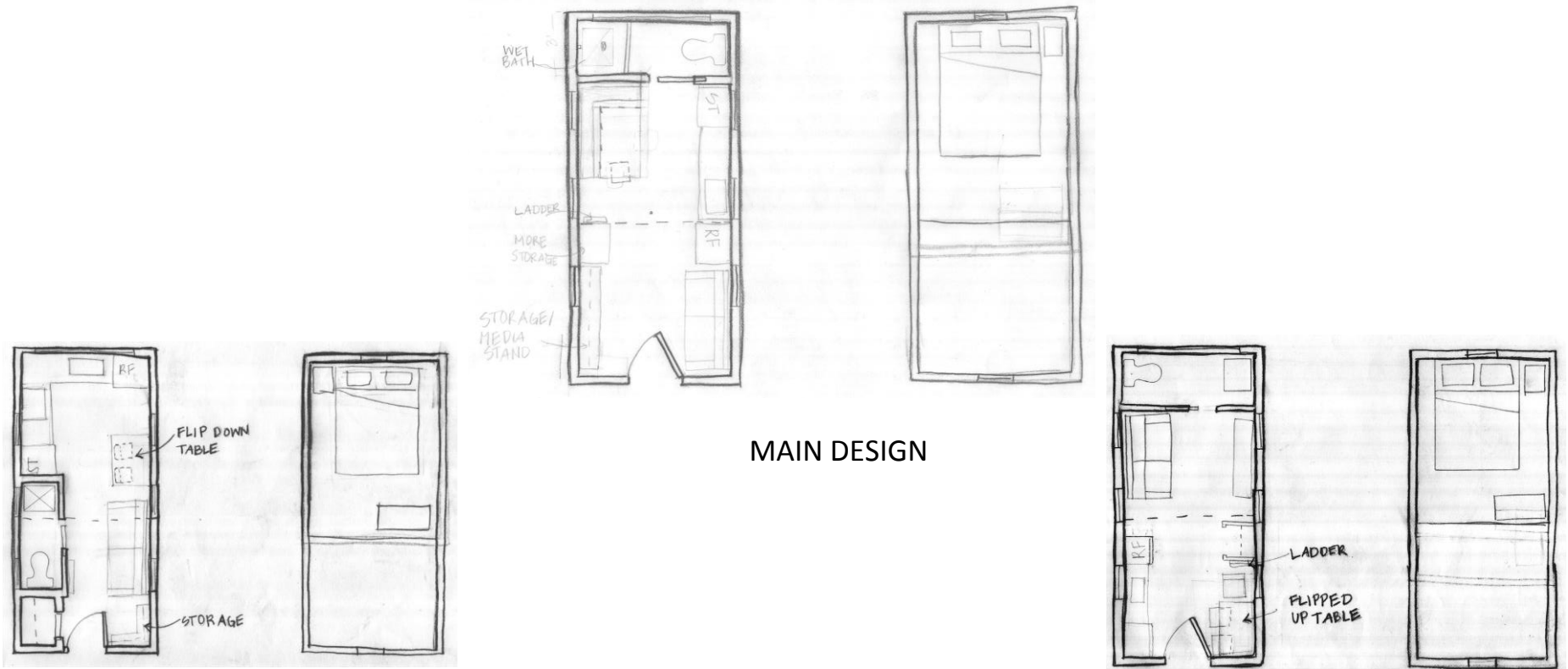


LOOSE DIAGRAMS

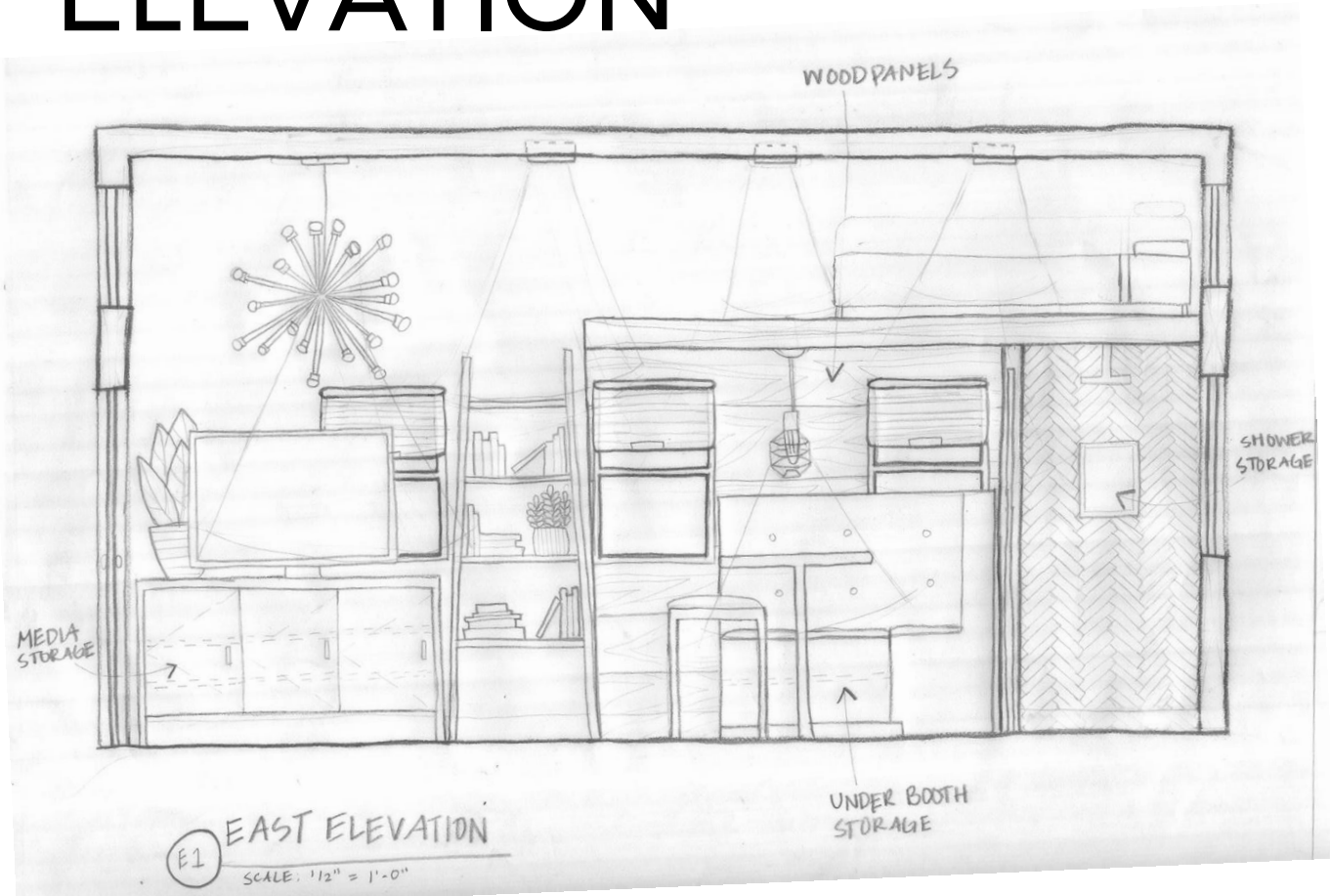
MAIN DESIGN



REFINED DIAGRAMS



EAST ELEVATION



WEST ELEVATION



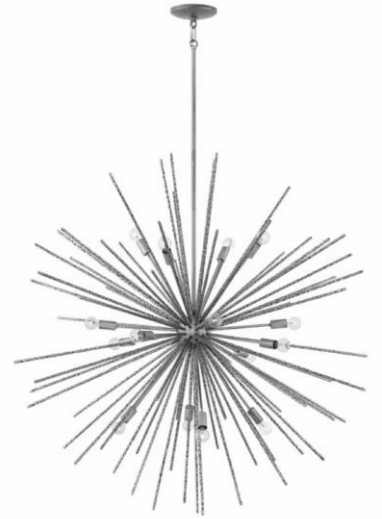
NORTH AND SOUTH ELEVATION



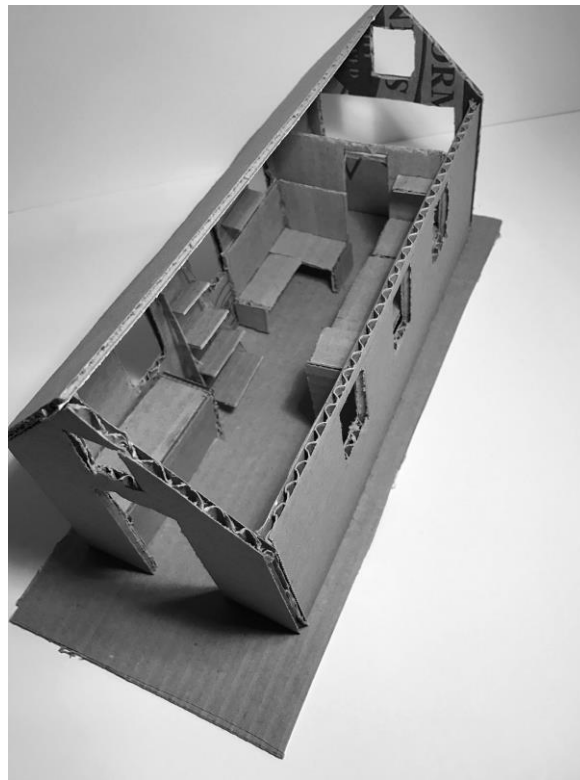
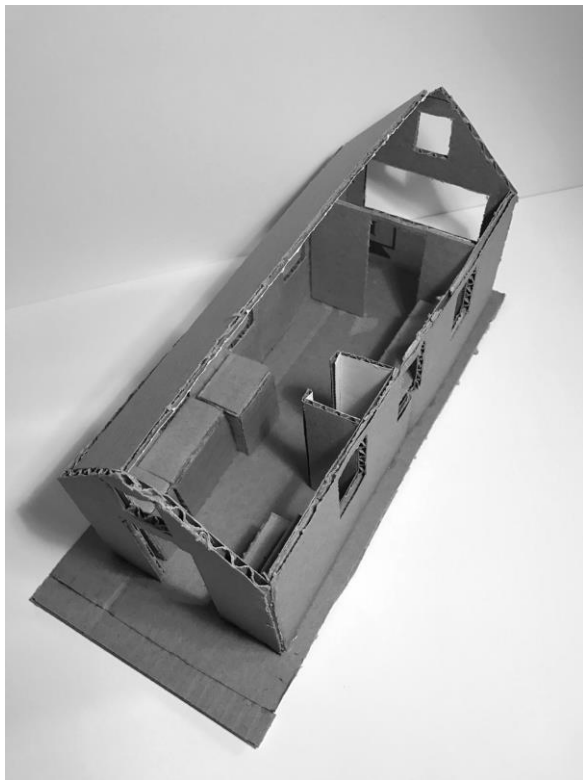
PERSPECTIVES



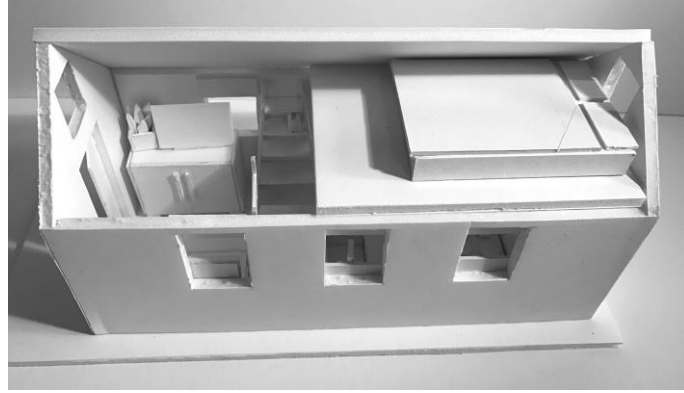
MATERIALS & FINISHES



STUDY MODELS



FINAL MODEL

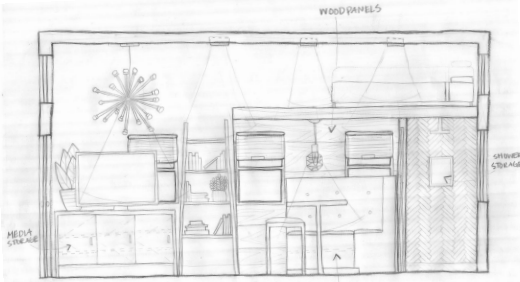
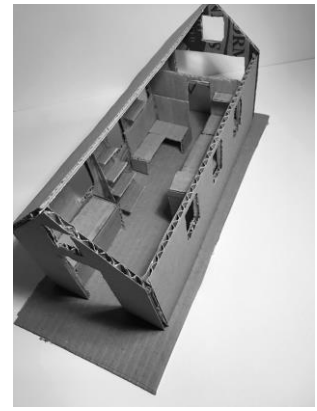
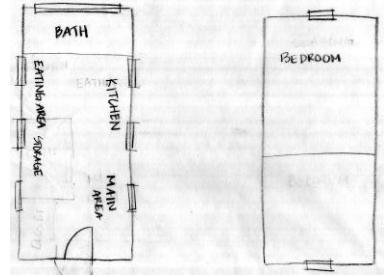
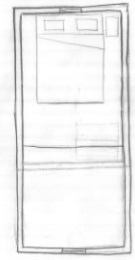
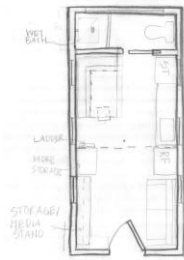




WEST ELEVATION
SCALE: 1/16" = 1'-0"

SUBWAY TILE BACKSLASH LADDER

SARA ARHEBANK



WOOD PANELS

SHOWER STORAGE



NORTH ELEVATION
SCALE: 1/16" = 1'-0"

SOUTH ELEVATION
SCALE: 1/16" = 1'-0"

