

LOFT >

1

1

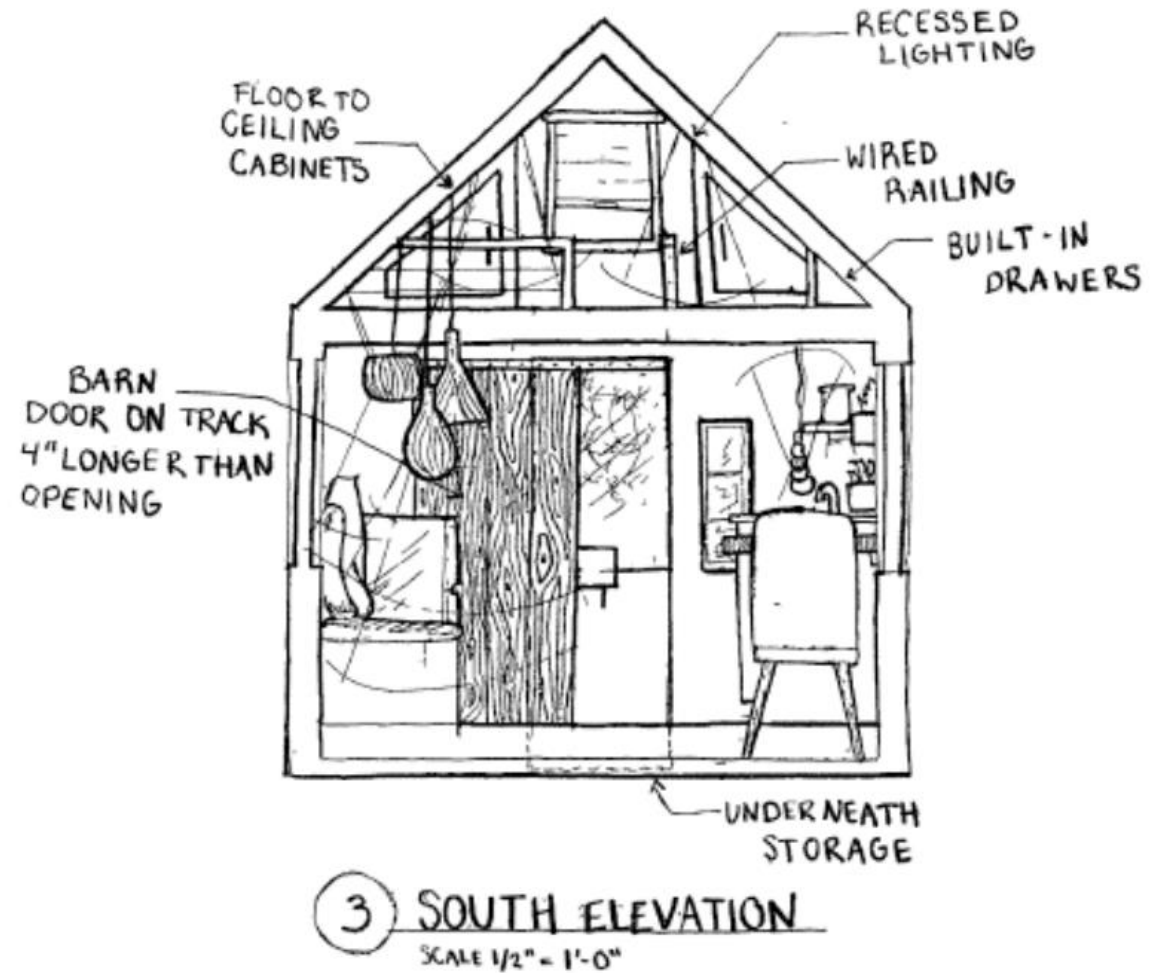
4

# Line weights

- Heavy line weight – perimeter walls, ground line, sectional cuts, texts, numbers, arrow head
- Intermediate line weight – elevated surface and objects, perimeter around the casework (including toe kick, countertop, handles), pendant light, outer edges of window, door opening, open railing
- Light line weight – individual cabinet doors, drawers, surface pattern (back splash), molding pattern, apron, hidden recessed light, light beam, crossed lines in sectional cut, leader, elevation circular symbol and divider line between the elevation and the scale
  - Long dashed line – indicate operable door swings
  - Short dashed line – indicate hidden objects – kitchen bowl, cabinet shelving

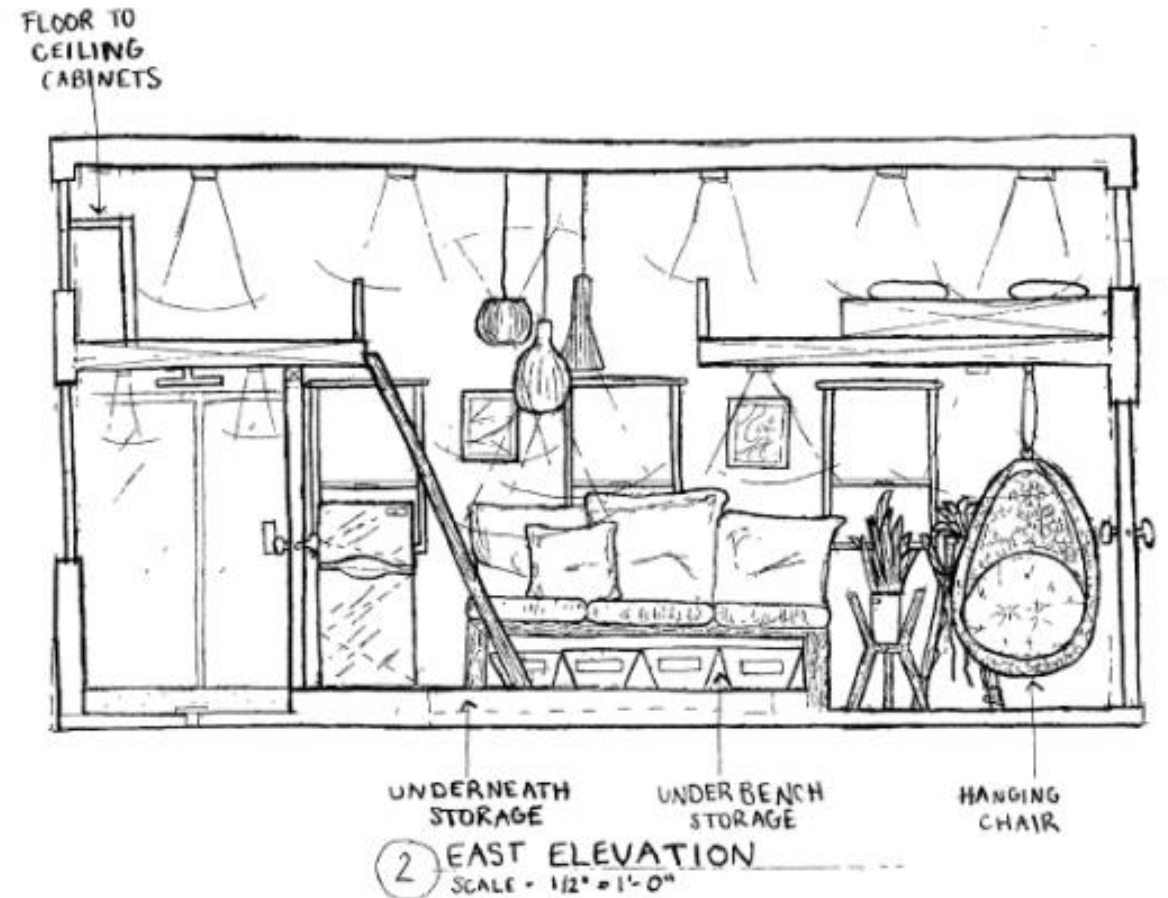
# Show details

- Architectural and non-architectural elements in details
  - Accurately illustrate materials by providing texture and value
- Provide critical lightings and entourage



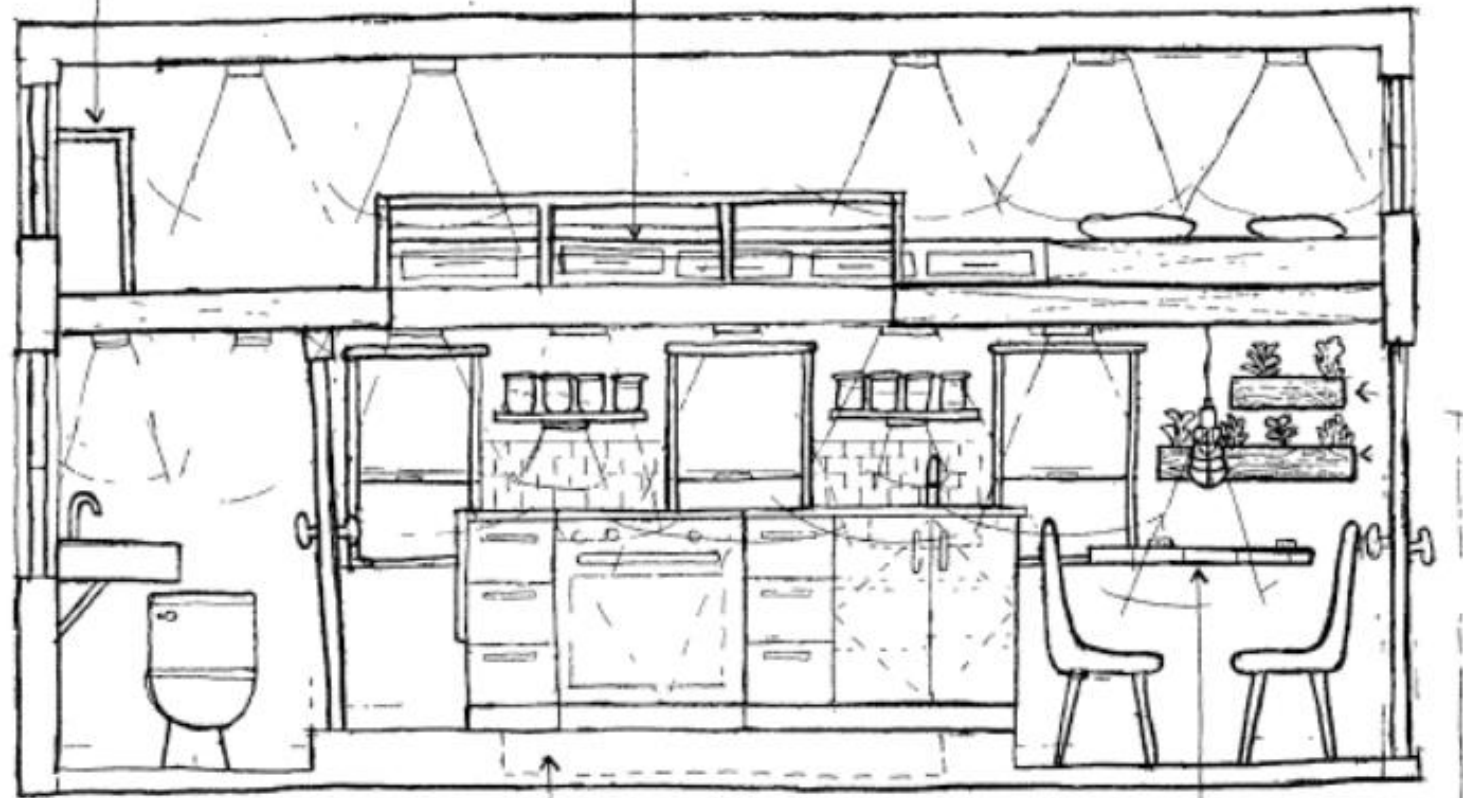
# Show details

- Architectural and non-architectural elements in details
  - Accurately illustrate materials by providing texture and value
- Provide critical lightings and entourage



FLOOR TO  
CEILING  
CABINETS

BASE BOARD  
STORAGE

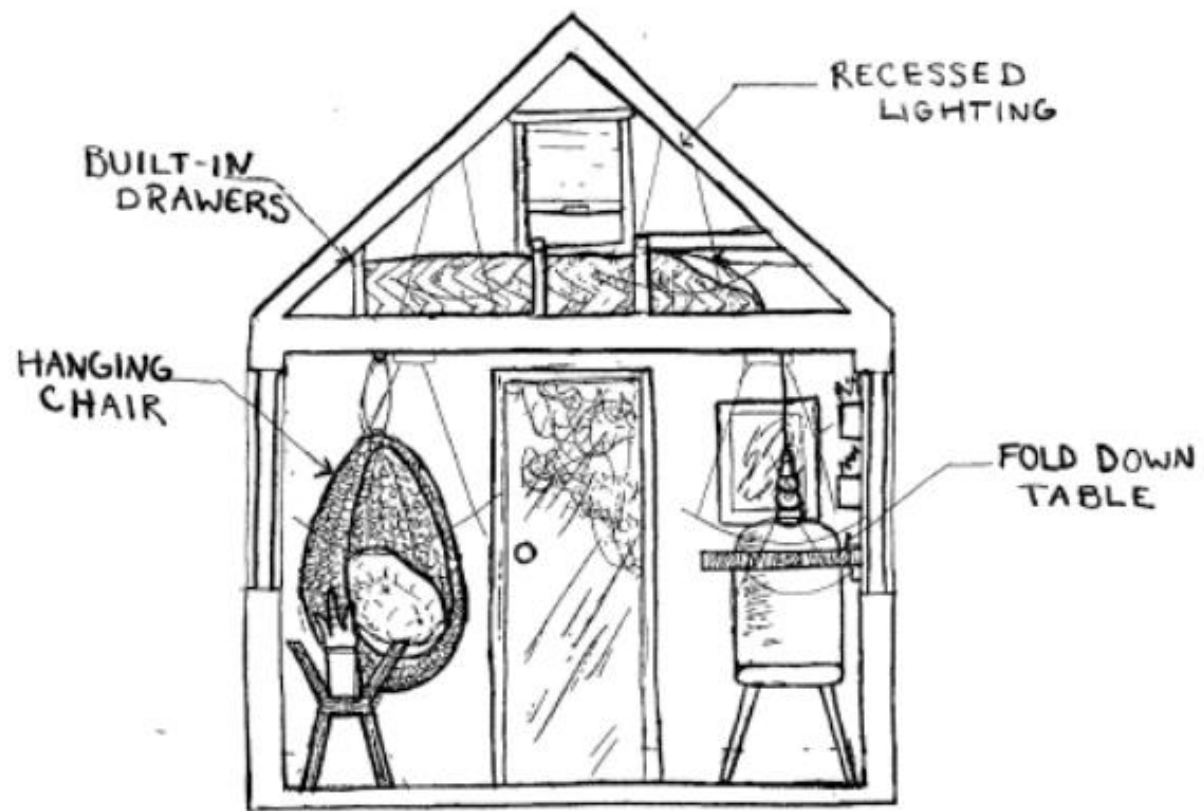


UNDERNEATH  
STORAGE

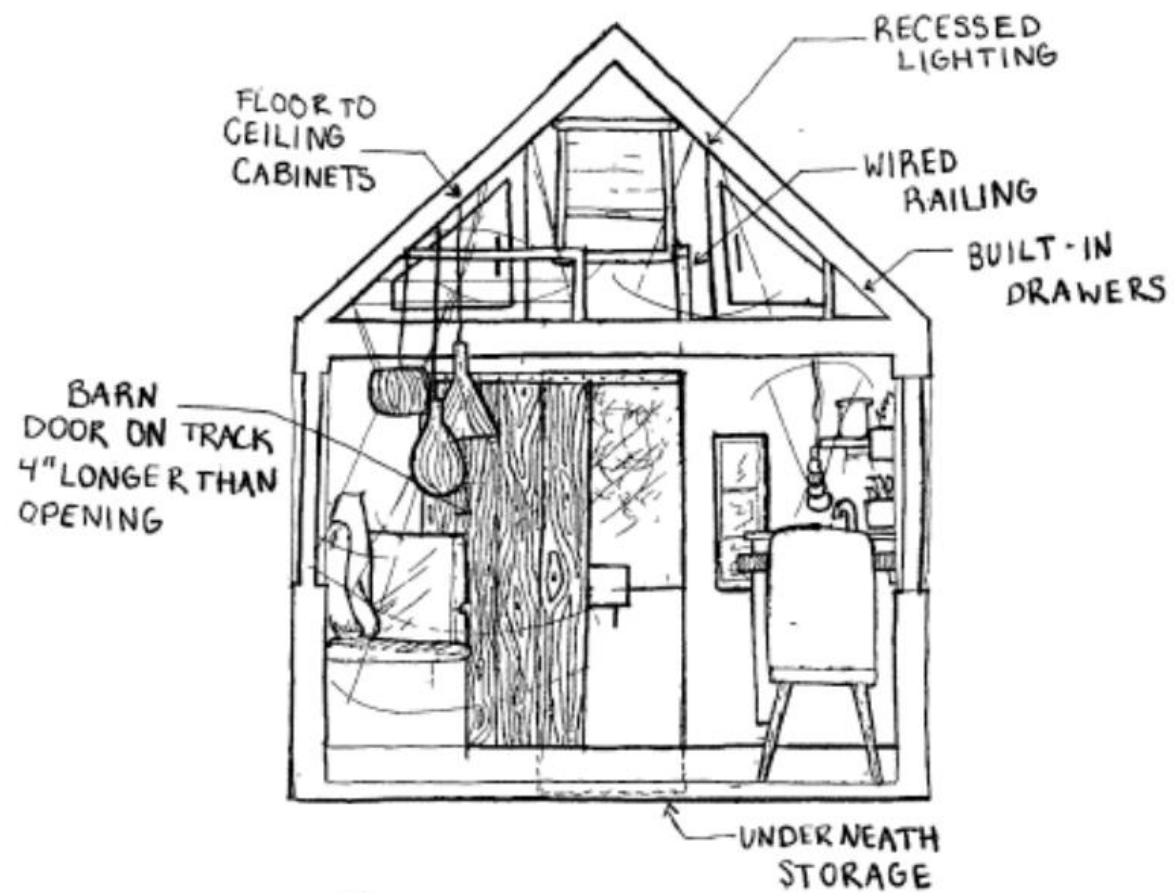
FOLD DOWN  
TABLE

PLANT  
SHELF

① WEST ELEVATION  
SCALE = 1/2" = 1'-0"



4 NORTH ELEVATION  
SCALE = 1'-0" = 1/2"



3 SOUTH ELEVATION  
SCALE 1/2" = 1'-0"